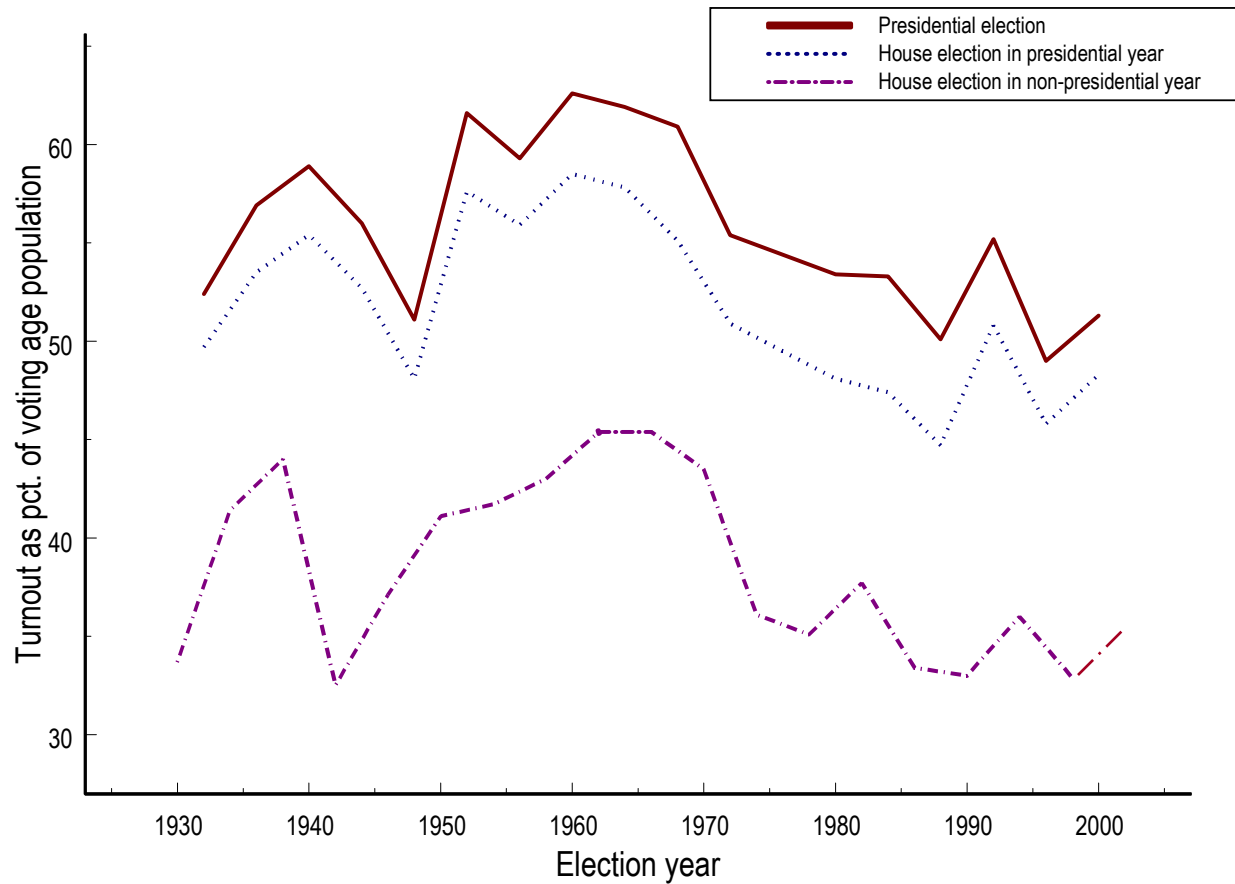


Congressional Voters

17.251

Fall 2004

Turnout



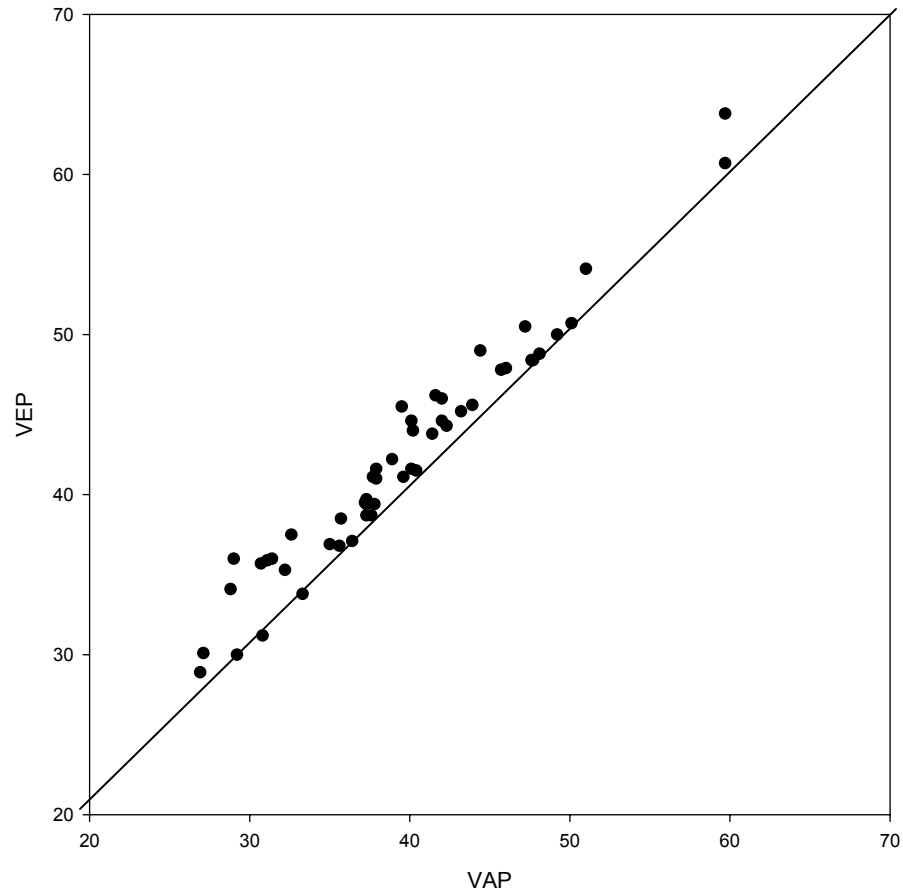
How to Calculate Turnout Pct.

- Turnout Pct. = Turnout / VAP

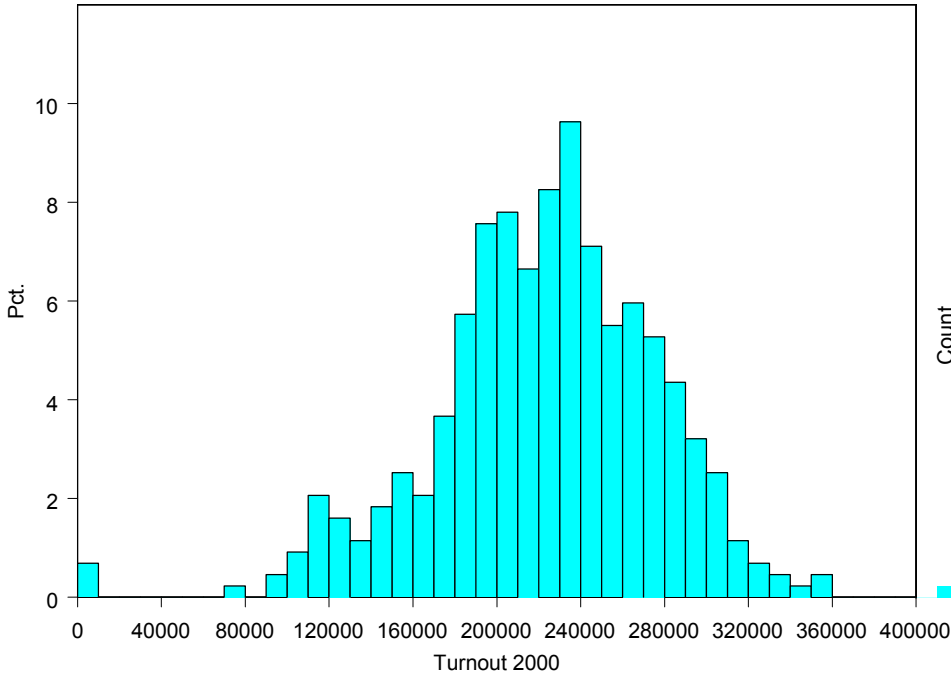
not

- Turnout / Registered
- New measure: Turnout / Voting eligible population

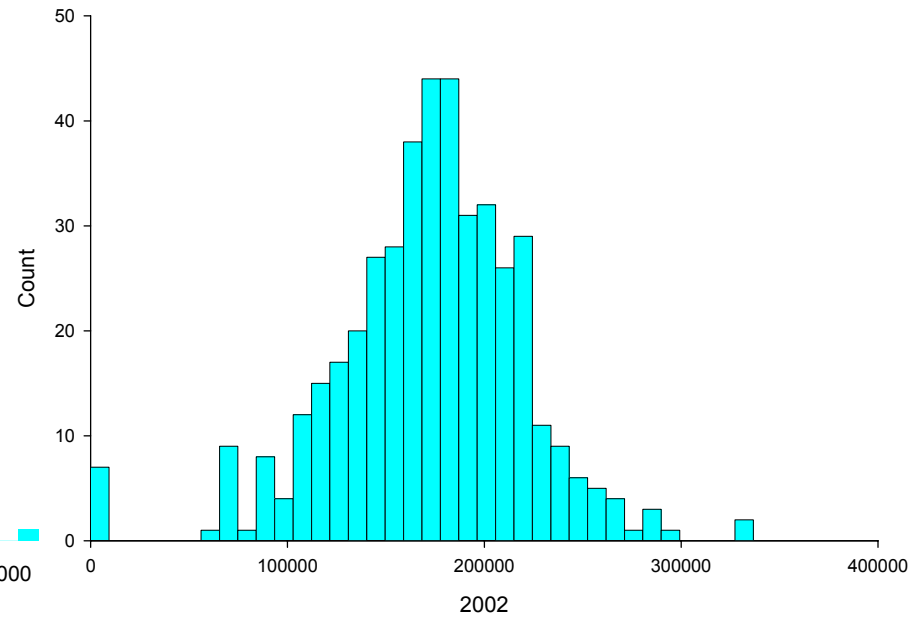
Turnout/VEP vs. Turnout/VAP



Variation in Turnout 1998 & 2000

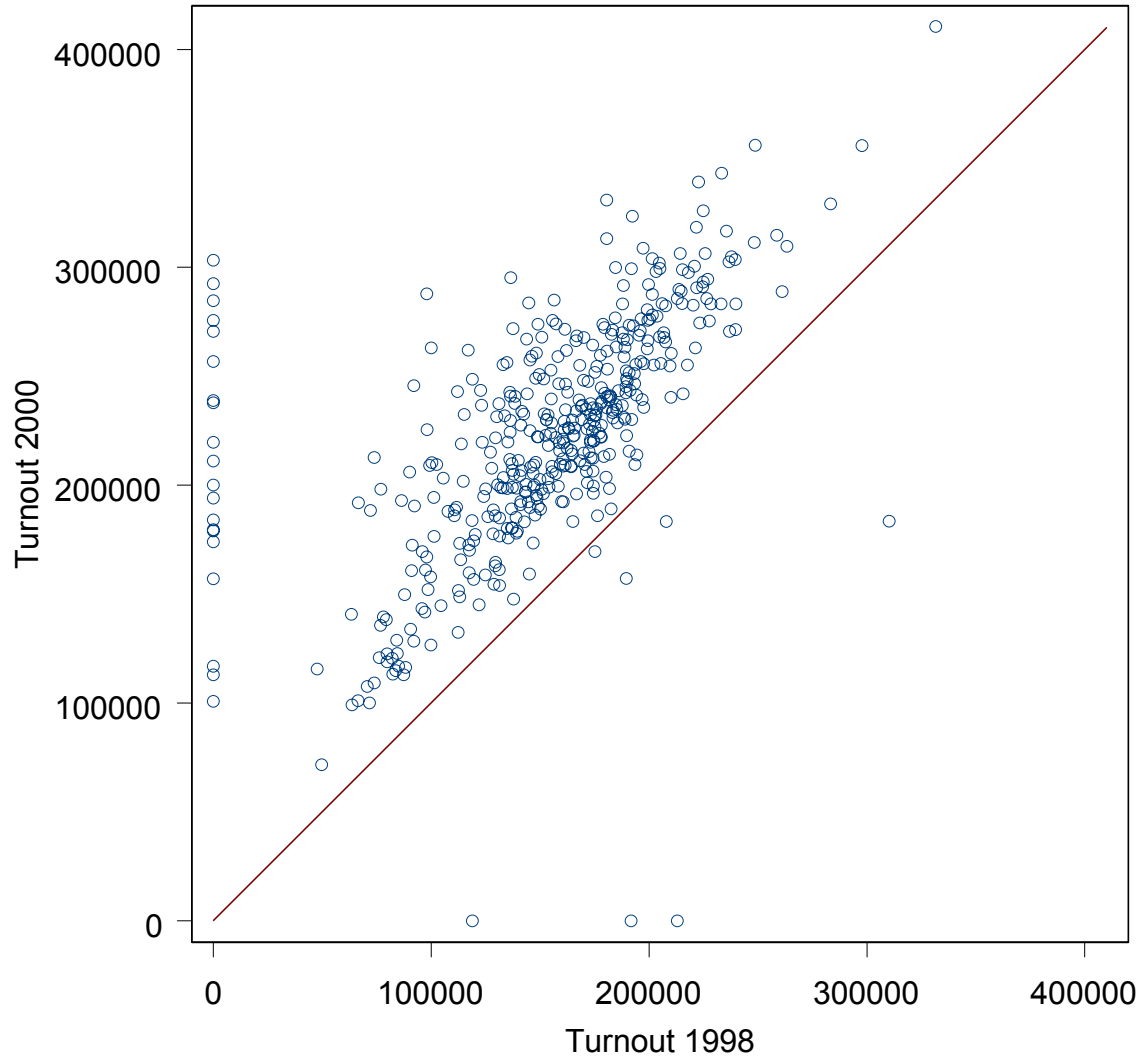


Mean = 223,000

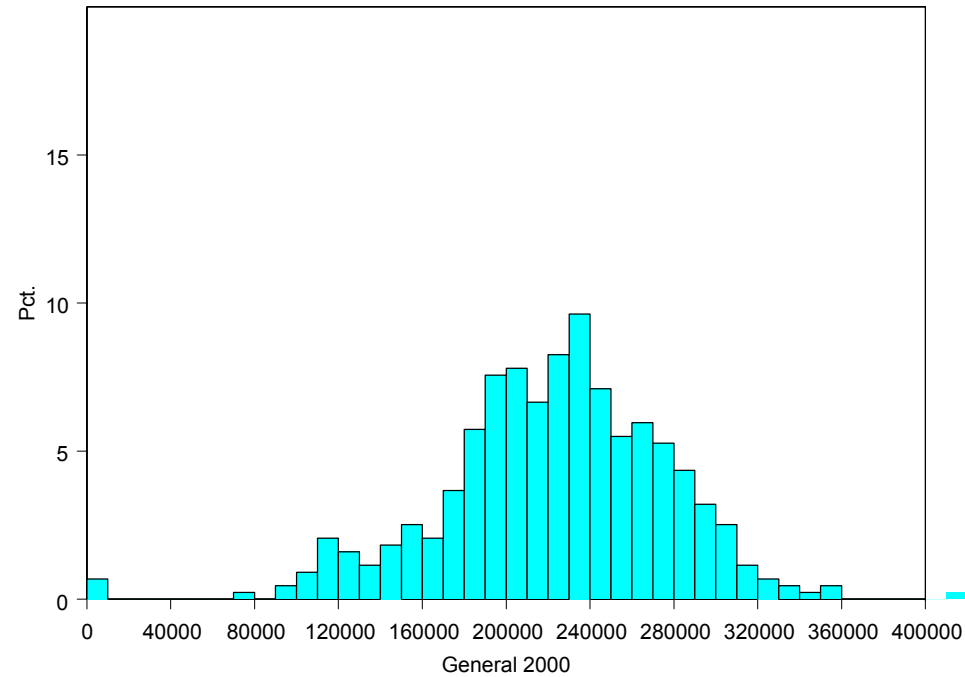
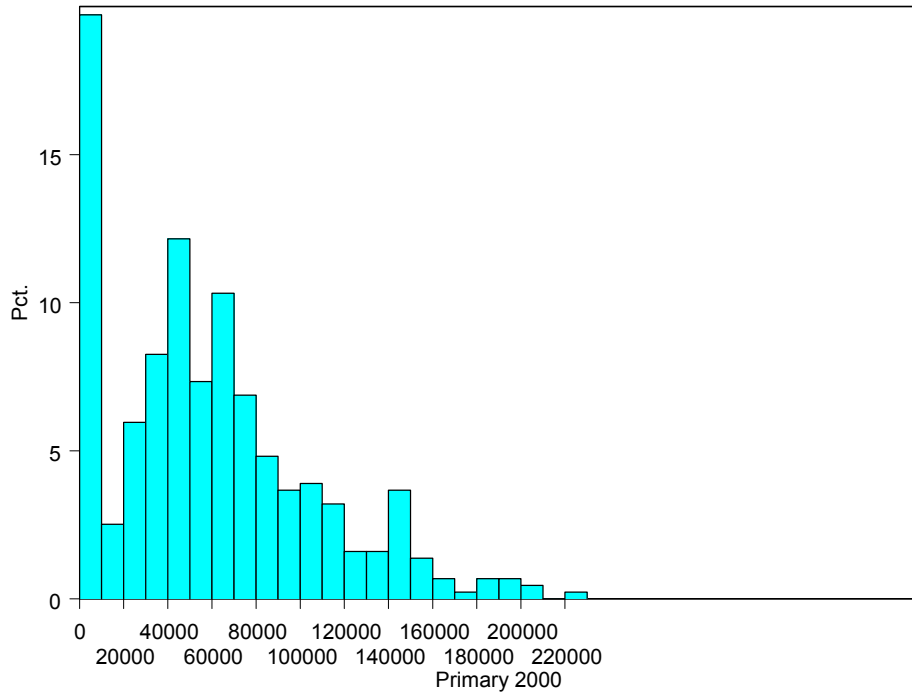


Mean = 171,469

Correlation in Turnout 1998 to 2000



Primary & General Election Turnout, 2000



Explaining (Non-)Voting

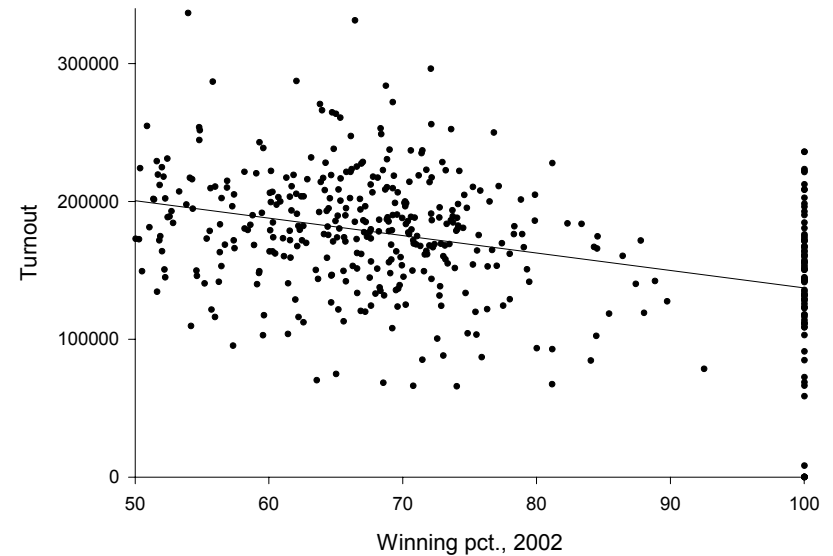
- Expected value of voting =
 - Benefit the individual receives as a consequence of the election outcome
 - Minus
 - The cost of voting

Explaining (Non-)Voting

State of the World w/out Citizen's Vote	Net Benefit if Citizen Abstains	Net Benefit if Citizen Votes	Condition under which Citizen Should Vote
<i>D</i> wins by more than 1 vote	B^D_{Citizen}	$B^D_{\text{Citizen}} - c$	Never
<i>D</i> wins by exactly 1 vote	B^D_{Citizen}	$B^D_{\text{Citizen}} - c$	Never
<i>D</i> and <i>R</i> tie	$(B^D_{\text{Citizen}} + B^R_{\text{Citizen}})/2$	$B^D_{\text{Citizen}} - c$	$(B^D_{\text{Citizen}} - B^R_{\text{Citizen}})/2 > c$
<i>R</i> wins by exactly 1 vote	B^R_{Citizen}	$(B^D_{\text{Citizen}} + B^R_{\text{Citizen}})/2 - c$	$(B^D_{\text{Citizen}} - B^R_{\text{Citizen}})/2 > c$
<i>R</i> wins by more than 1 vote	B^R_{Citizen}	$B^R_{\text{Citizen}} - c$	Never

Salvaging the Calculus

- Candidate differential
- Costs of voting
- Closeness of election
 - Voter attention
 - GOTV
- Citizen duty

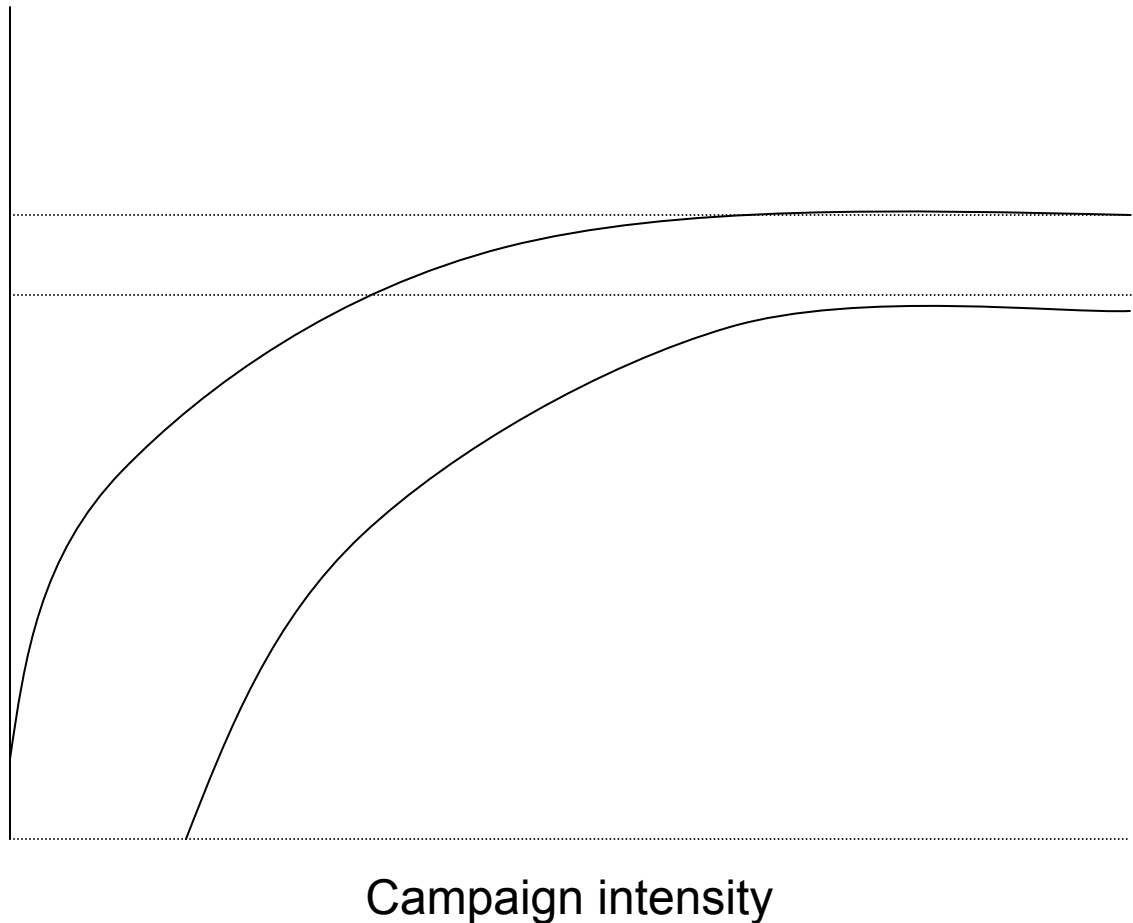


Who is hurt/helped by turnout

- Naïve view: Dems helped by turnout

Who is hurt/helped by turnout

- District view: the “out party”



Deciding whom to support

- Ideology
 - Downsian logic directly
- Party ID
 - Downsian logic by proxy

Party and Ideology Distance as Explanatory Factors in 2000 Cong'l Elections

House	Ideology of voter			
Party ID	Lib.	Mod.	Con.	Total
Dem	.86	.81	.70	.81
Ind.	.54	.60	.47	.50
Rep	.29	.33	.16	.18
Total	.78	.67	.32	.51

Senate	Ideology of voter			
Party ID	Lib.	Mod.	Con.	Total
Dem	.90	.83	.80	.87
Ind.	.79	.67	.48	.60
Rep	.28	.09	.15	.16
Total	.84	.61	.34	.54

Source: 2000 ANES

Note: R's not asked ideological placement of House or Senate candidates

Overall voting effect, 2002 House election

Party identification	Effect of changing from an Ind. to a Dem.	0.25 (0.02)
Ideology	Effect of changing from a mod. To a lib.	0.07 (0.02)
Democratic incumbent	Effect of changing from a open seat race to a Dem. Inc.	0.18 (0.02)
Constant		0.54 (0.02)
R ²		.49
N		586

A Word about Primaries

- Party not a useful cue
- Not much research, but.....
 - Primary voters are different from general election voters
 - Primary voters are more ideologically extreme, but
 - Primary voters are more strategically sophisticated than general election voters

The Ideological Purity/Electability Tradeoff

