

**VooDoo Supplement
to Undergraduate
Residence Guide
NOVEMBER 1975**

voo doo

massachusetts institute of technology
cambridge, massachusetts

volume 54, number 1
november 1975

published five times a year by voodoo magazine, a duly-recognized activity of students at the massachusetts institute of technology--on-campus subscriptions 50¢ for five issues



general manager.....larry appleman
editor-in-chief.....brian bradley

editor-in-time.....scott batterman
business manager.....david liu
senior.....tom castelnuovo
junior.....jon horn
sophomore.....geoff baskir
freshman.....frank caserta
and.....a cast of tens

SUBSCRIBE!

VooDoo
the MIT humor magazine
"every issue a surprise"
5 issues for 50¢
send to: VooDoo



Box C, East Campus
3 Ames Street
Cambridge, MA 02139

Charlie-the-Tech-Tailor "Est. 1918"

Stud Center Basement 354-2088



Press your suit
Mend your clothes
Sew on buttons
Dry clean your clothing

Laundry Service Available - Shoe Repairing
N.B. He is noted for the finest work at the
lowest prices.

Nov. 15



STRAT'S RAT



Dec. 6

16 OZ. CUPS DARK
& LIGHT BEER

.25 A CUP, 5 FOR \$1

SANGRIA & WHITE WINE

\$2 A BOTTLE



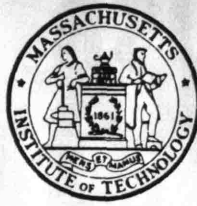
(STRATTON
BATHSKELLER)

in Sala

FREE

ADMISSION

College Id Required



OFFICE OF THE DEAN
FOR STUDENT AFFAIRS

CAMBRIDGE, MASSACHUSETTS 02139

To the Class of '80:

We would like to congratulate you now on your acceptance to M. I. T. and the receipt of your first payment of the fiscal year. I hope that you will take this opportunity to commend yourself on your achievement and do some serious thinking about how you will make future payments. In keeping with our newly-instituted policy of "The Student as Customer," we will not do either of these things for you.

FRESHMAN HOUSING

You will have a choice among two hundred and forty-seven living groups, most of whom have sent you identical literature. It is your responsibility to decide who to believe and submit the six 'Choice of Residence' cards to the appropriate deans by 2 pm Sunday, or you will be stricken from the rolls. If you do not have all of these cards, you must report to the Bursar's office IMMEDIATELY with your cancelled check as proof of payment and fill in one of the RED "Plea for Clemency" cards. Failure to do so will result in your dismissal and irrevocable destruction of your computerized record.

HOUSING PROGRAM

The keystone to satisfactory implemen-

tation of campus housing programs is the policy of "growth without fixed costs." Essentially, existing and insufficiently occupied space shall be continually sub-divided until the maximum floor space to cubic dollar ratio is attained. Ideally, this will be a honeycombed structure, with the student inserted or removed by modern injection - molding techniques. This system should be fully implemented by the 1976-1977 school season.

Minds shall be kept alert and energy conserved by maintaining a crisp 58-60 degree temperature in dorm rooms during the winter months. Working in concert with Physical Plant is a necessity. Any resistance to their instructions will result in immediate expulsion and possible prosecution under the new state law.

If you have any questions about Institute Rules or policy, dial 3-1746 and listen to the recorded message.

Have a nice day!

Kenneth C. Browning
Dean for Student Affairs

Stratton House

In order to ease the present student housing crisis, MIT has recently made available additional low-cost living space. Called Stratton House, it is conveniently located on the west end of campus, close to the armory and fashionable Massachusetts Avenue.

Embodying a new revolutionary concept in on-campus-housing, Stratton House offers not the conventional choice of singles, doubles, and triples. Rather, there is one large donut-shaped room enclosing well over 420 individuals brought together to form a sticky, gelatinous mass.

Of course, there is also more traditional rooming available, on the floor below, where different interest groups are allowing their former offices to become live-in spaces, putting the rooms to much more useful purposes. Here are the newest of these "cooperative living activities."

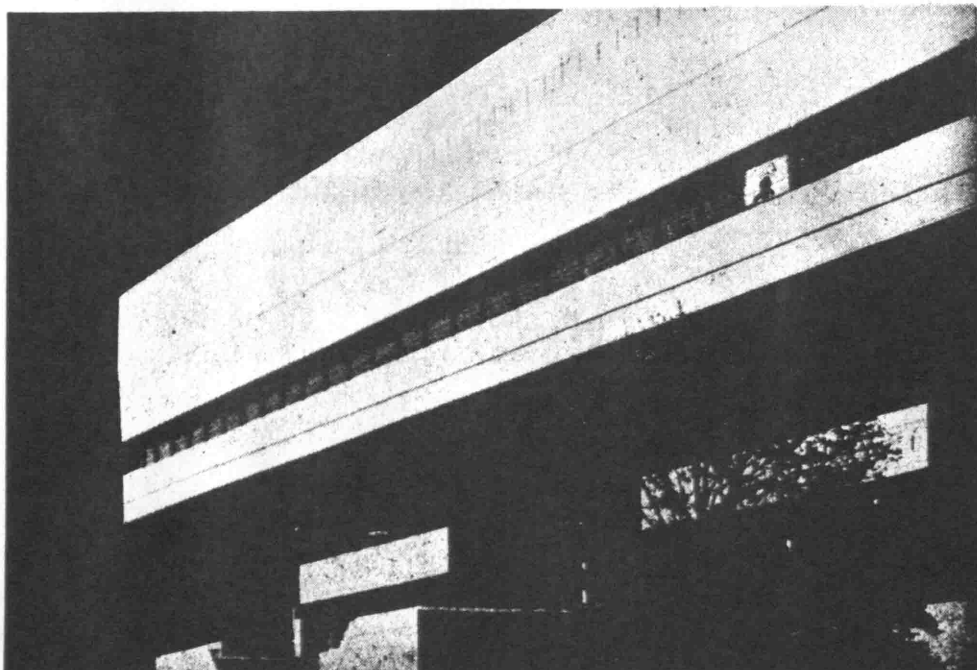
AMERICAN NECROPHILE LEAGUE

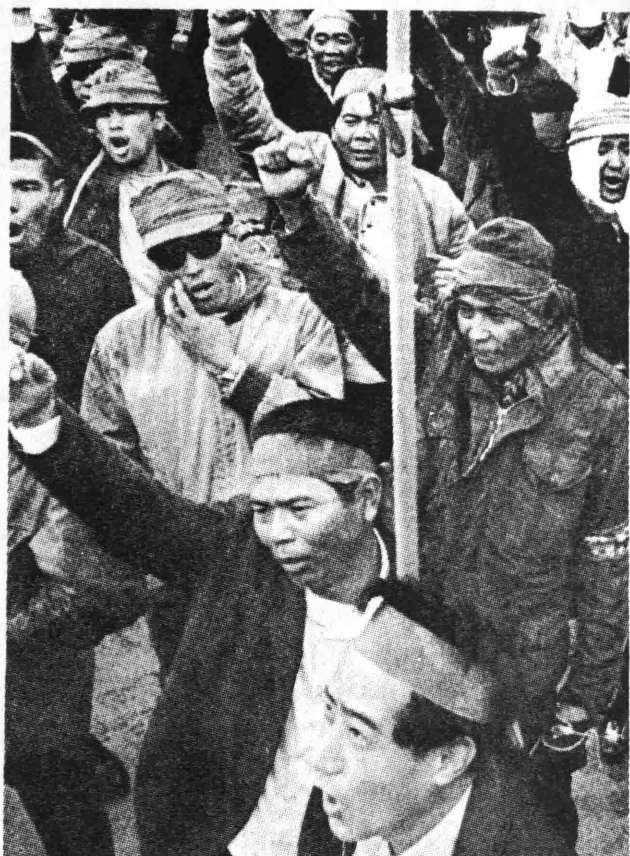
The MIT chapter of the American Necrophile League is organized prima-

rily to provide a pleasant atmosphere for dead people (male and female alike) to meet. We are always looking for new "members," but old members will do if you have any to spare.

It is only very recently that people in the U.S. have been able to accept the concept of dead people as human beings with needs and desires. For years, dead people have been refused employment, harrassed by police, forced into primitive medical schemes, and generally, treated like meat. To counter this oppression has required organization and several large freezers.

ANL provides many services. Particularly for people at MIT, the most important is the Lukewarm Line, a telephone service to provide counseling for people "going under" or for students needing help to determine their own "rate of spoilage." ANL also provides a center for social life for dead people, with dances, parties, and other social events frequently held, sometimes on campus, and sometimes in a red station wagon parked outside of Bexley.





CLUB CHINKO

The members of Club Chinko of MIT come from every country in China. The central purpose of this club is to bring together hundreds of people indistinguishable from one another into a single room and try to keep them there for prolonged periods of time.

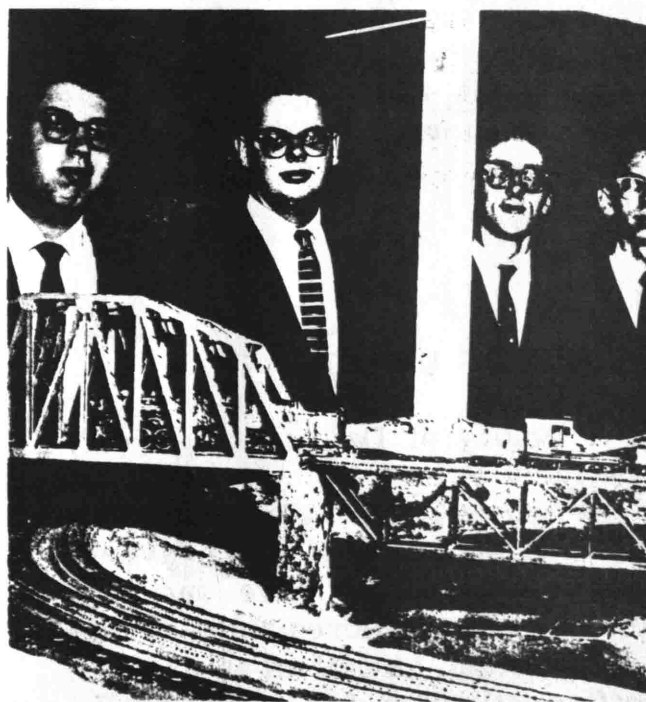
These activities are of three types, Cultural, Social, and Other. The first type consists of Cultural Events, Cultural Films, and Cultural Exhibitions; the second type relates to Social Conferences, Social Films, and Social Exhibitions, and the third type consists of other things. A general assembly takes place shortly after Chinese New Year where we vote on it.

DINING SERVICE SOCIETY

MIT EATS IT is a cry heard frequently through the halls of the institute. That is where the Dining Service Society comes in. Formerly known as the Model Bison Society, the MIT Dining Service Society is dedicated to the ideal that people should not laugh at what they eat. You are what you eat, and what you eat, can't eat you, therefore, eat all you can. Know what you eat, and you will know yourself. You know?

THE INTERCOLLEGIATE BRIDGE CLUB

Originally founded in 1927 to build a series of bridges between the Ivy League colleges, the MIT Intercollegiate Bridge Club has expanded the scope of its activity to include several smaller, less prestigious colleges in the New England area. See you at the Midway!



Stratton House cont.

JEWS FOR JUDAS

JESUS IS DEAD! Strange words for a world in which everything appears to be alive, and yet they have a haunting attraction to them. As men and women we often seem torn between a desire to



run our own lives and a counter-desire to run the lives of others. We of Jews for Judas have seen that JESUS IS DEAD and that there is no use in looking to him as the solution to this dilemma.

If you are interested in joining with us to share our drive for the unity of the human race, the establishing of a world commonwealth in which all nations, races, creeds, and classes have come together to form a sticky gelatinous Mass, stop by our booth at the activity midway.

A PRIORY OF DE MOLEST

The A Priory of De Molest is a duly constricted Priory of the order of De Molest and is open to all De Molests who are of legal majority and have no prison record. We have our own source of burnt children and a unique initiation ritual, as well as an exceedingly fine collection of vegetable replicas.

MIT FOLK SWEAT CLUB

"Boy, it's hot in here."

—Joan of Arc

This is the motto of the MIT Folk Sweat Club, and we invite you to come see us prove its truth. We jerk spasmodically, at festivals and any other time we get together. We are not restricted to merely standing around in small hot damp steam rooms smelling bad, but rather we come together as often as possible in large hot damp gyms and meeting rooms and we stink... but let's not be unpleasant. In fact, our meetings have one main purpose--to sweat like pigs--and every Sunday night a large group from all over the New England area meets to do just that. Half of the evening is reserved for simple perspiring, interspersed with instruction, and the other half is spontaneously arranged for whatever we feel like doing. We pride ourselves in having the lowest rate of spontaneous combustion of any activity on campus, and our members may frequently be seen frolicking gaily, wrapped in the carcasses of dead Water Buffalo.





THE MIT SKY-DYING CLUB

"You've got to be crazy to want to jump out of a perfectly good airplane."

Did you ever jump from a hayloft into a haystack? Did you ever jump from a 5000-foot hayloft into a two-foot haystack? Have you ever jumped from a construction site? It was fun, wasn't it? Or if you haven't done any of these things, you've wanted to, at least, because it would be fun.

FUN! That's what sky-dying is all about. Imagine a hayloft thousands of feet high. As you fall, your speed builds rapidly until you reach 120 to 180 miles per hour, depending upon your position, until impact. Whereupon you will become a sticky cohesive gelatinous mass. It's just like floating on a cushion of earth. You can use these skills to actually drive your body through solid rock!

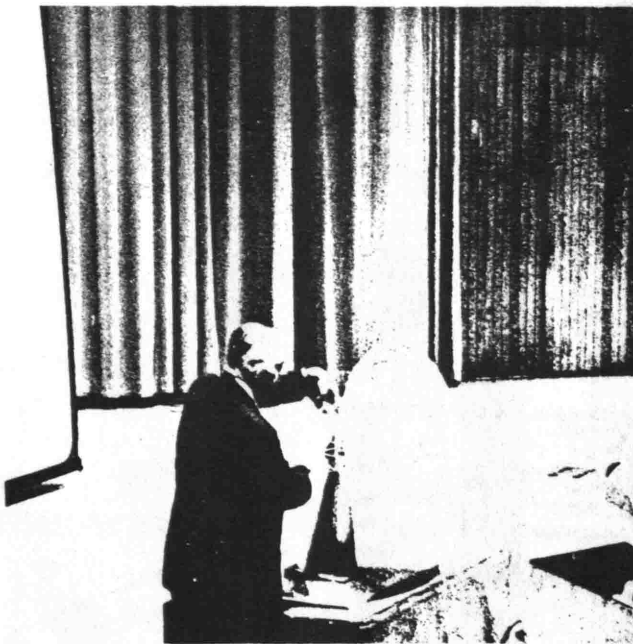
REBATE SOCIETY

Ever since a bookkeeping error allotted us \$100 of every paying student's tuition, undergraduate and graduate, we decided to do nothing at all except divvy it up among our members.



WMIT

WMIT is a non-existent FM station (54.2) with an effective power of 18.7 watts broadcast only into the north-eastern wall of Ashdown House.



South Campus (Old House)

South Campus cannot be avoided when considering your choice of living group at MIT. Each of the Institute houses has its own unique environment, but we feel that in both the physical facilities and the spirit of the residents it ranks as one of the most unusual.

South Campus (also known as "Old House") was discovered by Massachusetts Bay authorities when dragging the river for a murder weapon over four years ago. Once located in a fashionable section of Boston, it was obscured in the landfill and flooding operation creating Back Bay over one hundred and fifty years ago. With only minor replastering for the inclusion of electric wiring and the replacement of a slightly water-damaged throw-rug, South Campus was made ready for habitation once again.

Located only 120 feet from the main

building of MIT, South Campus represents an enticing choice to the new student unfamiliar with the city. It is the third-closest living group to campus—its impressive green-brick structure proudly proclaims the fact that it is the only dormitory in the United States to have been built more than 50 years before the college it serves. Social life is active, with many events centered about our most prized facility, the world's largest outdoor indoor swimming pool. Of course, the walk to school is sometimes unpleasant, but we have established an excellent ride system to lessen the inconvenience. And of course it helps that we are a diverse yet unified group of 415 individuals bound together to form a sticky, gelatinous mass. Why don't you stop by this September, share a few cold beers, and take a look at the place (weather permitting). And if you have any questions, please don't hesitate to call or write.

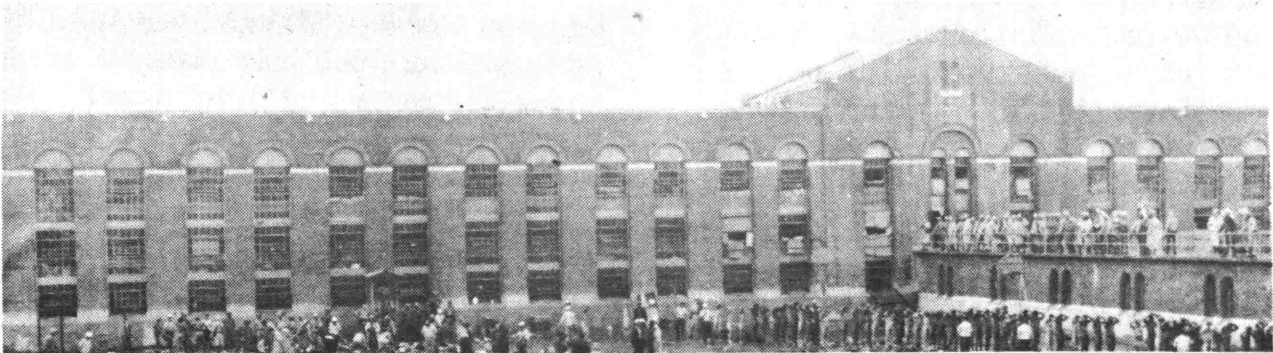


Robert Hall

Robert Hall is the sort of place you would want to live in if you are looking for —

- A place that will not allow pets.
- A place that will not allow smoking.
- A place that will not allow cooking in your room.
- A place that will not allow visitors after 10 pm.
- A place that will not allow long hair or jeans.
- A place that will not provide electricity after 9 pm.

Why don't you stop by this rush week?



Number One Club

"Be it ever so humble, there's no place like home..."

The Number One Club was founded in 1927 by one of our past presidents seeking a tax shelter. Essentially non-profit by nature, we are seeking to create an atmosphere of elegant social abandon, where selected people can enjoy common experiences, and each other, without fear of prosecution.

Being a fraternity, we encourage participation in activities and chores; but, as a diversified living group, we must emphasize the duties of our inferiors. One might even say we are a united group of individuals who enjoy doing things together separately.

To ensure that not all of our time is spent studying, Number One Club sponsors numerous social functions. Every other week, a masked ball is held in the west foyer; there are many private screenings of hard-to-see films for members and their guests (some of us



have even made films of our own.) The term "Negro Roast" has become quite familiar to us. As one member wryly observed, the food seems to talk extremely fast, although the girls disappear faster.

Because of certain legal and financial irregularities, we shall not make our address known, although we are listed in Institute publications as a warehouse for soap and toilet paper. But if we had really wanted to see you, we would have sent a car for you, anyway.



Gamma Mu Pi

Now's the time to start thinking about your future. What do you want to do in the next four years? Do you want to be trapped cold and friendless in a dirty house that sees you only as a housebill? Or do you want to live in a clean, cheerful place where everybody is your friend and you can get help whenever you need it?

If you said "yes!" to the second choice, we think you should check out Gamma Mu Pi fraternity. We are a group of many types of people, many of us deeply involved in MIT and outside activities, who have gotten together in a pleasant living environment. Our deep and sincere liking for each other makes us a breathing, organic whole even greater than the sum of us, the individual parts. There aren't many problems here, but when one does come up, everyone discusses it at our weekly meeting where anyone can say what-

ever they feel without fear of bitterness. After these sessions, we all feel much better!

Meals here are a time for good-natured food prepared by a different brother each night. The hectic pace of MIT doesn't leave much time for conversation during the week, but on Friday and Saturday nights we all get together in the Chapter Room and talk, sing, play Monopoly, and do all sorts of other fun things. But why don't you come over and meet us? See for yourself. And have a nice day! OK?



Delta Ipsalon Mu



Hi from the FUN-LOVING brothers at Delta Ipsalon Mu. We're a bunch of diverse guys but individuals too. But we're real close. We're the kind of guys that get our kicks from overpowering the opposition--it could be the enemy in I.M. football or our dates from Wellesley, if you know what I mean. And even if the priest is right and the meek will "get" the earth, we're doing all right for now. You know?

Schoolwork is no "problem" here. Everybody here works together, whether they want to or not, although I



never heard any complaints. Everybody in the house got a 3.1 every year so far.

Weekends are when things really get wild around the frat. Friday night everybody brings their dates over to dinner. If you're ugly or stupid or anything, the other brothers are always willing to help you get one. The geeks that print this book won't let us tell you what happens after we're done eating, but we can tell you that it's a girl with a cast iron gut who comes back after we're done with them!

Over the summer we made a big repair to the house. We ripped out all

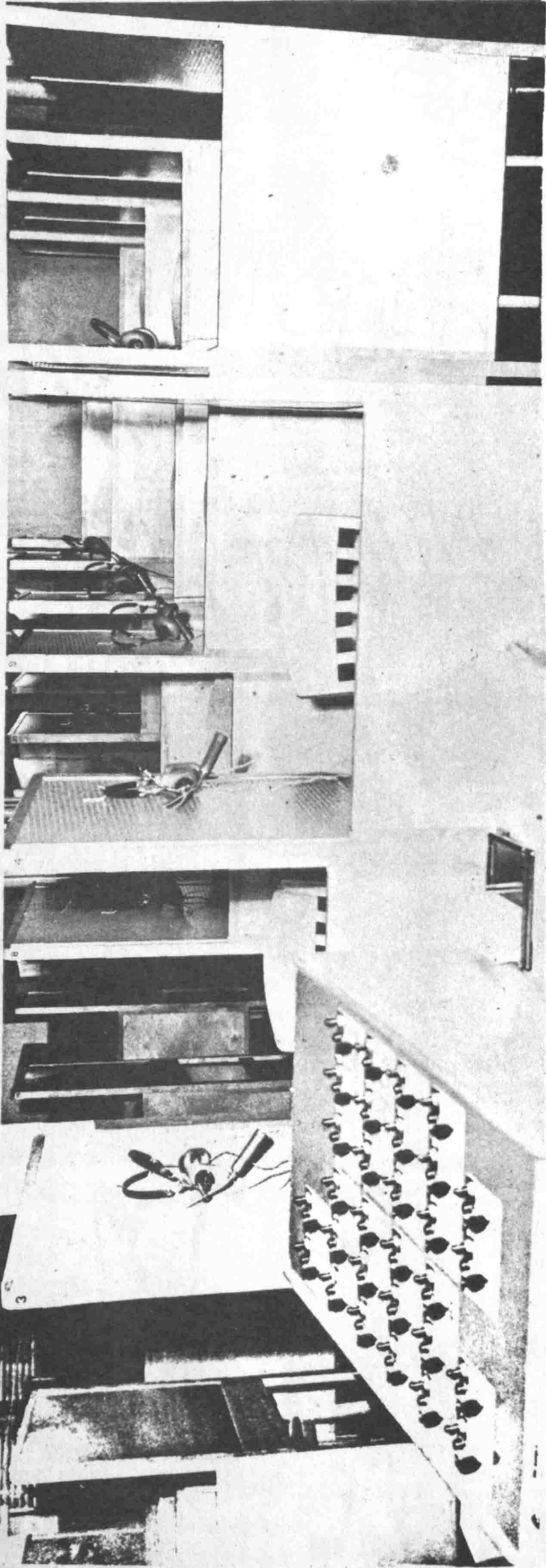


the carpet. It cost us too much to clean it last year.

The brothers are all a big laugh, except for that weasel Simon. When we go out a bunch of us at a time, we have so much fun we could just about bust a gut, we laugh so much--and everyone's fair game, even other brothers.

So if you think you've got what it takes, stop by DIM at R/O week and we'll really give you an eyeful.

COBOL House



"LOGIN!"

COBOL House is a new co-operative living group conveniently located less than seven miles from campus. Completed less than one month ago, COBOL House is the only foreign language living group at M.I.T. not bound by meaningless agreements and contracts.

The purpose of the House is to create an atmosphere in which COBOL is spoken, and in which tenants may gain some insight into its culture. Students are expected to be relatively fluent in the language, but it is to be remembered that the House is designed to enhance the classroom teaching, not to cut the legs off it.

COBOL House offers several unique advantages over other living groups. The small size of the house (12 feet by 8 feet) helps to bring our 15 residents closer than they might be in the alternative

living groups. COBOL House is co-operative to the extent that kitchen, lounge, bathroom, and sleeping quarters are not separated by contrivances as artificial as walls; so great is our faith in one another that we do not even feel the need to lock valuable plumbing and electrical wiring inside of walls, but can leave them in the open without fear!

COBOL House does away with the artificial class system of single, double, and triple rooms. We have set the student free to enjoy the wonders of the language: free to read the great works in COBOL, study COBOL architecture, taste COBOL cuisine. Don't you think it's time for you to check us out?

"DO!"

"LOGOUT!"

Alpha Beta Supe

SMOKING LIKE FOREST FIRES
DEFACING PUBLIC PROPERTY
HOWLING LIKE LOONS
ACTING LIKE PIGS
SELF-ABUSE
URINATING ON HELPLESS CRIPPLES
REVVING ENGINES UNTIL 2 AM.
GRABBING TITS OF DRUNKEN DEBS
STEALING SILVERWARE FROM M.I.T.
EXPOSING OURSELVES ON SUBWAYS
VANDALIZING PARKED CARS
COPYING EACH OTHER'S HOMEWORK
DRINKING UNTIL WE VOMIT

These small paragraphs can tell you so little about what a house is really like. Alpha Beta Supe is the kind of place that you have to visit to really know. Only then can you tell how we are different from all the other fraternities that seem to be exactly the same.

Hoping to see you Rush Week.



容儒樓 *Yound Lee*
CHINESE AND AMERICAN
RESTAURANT

AIR CONDITIONED

29 CHURCH STREET
HARVARD SQ., CAMBRIDGE
TEL. UN4-3018

PERRY V. WONG, MGR.

29 Church Street - Cambridge at Harvard Square
For take home service call UN 4 - 3018

**ELI
HEFFRON
& SONS,
INC.**

139 Hampshire St.
547-4005

**Dealers in Surplus
Electronic Equipment**

**Come In and
Look Around.**

Open
8 am-5 pm
Monday thru Friday
8 am-3:30 pm
Saturday

*Ferranti-Dege
Stores*



Here is a portrait of a satisfied owner and his family. They are the new owners of a new Nikon Photomic F2. You too can be a satisfied owner of one of the world's great camera systems. Come into one of Ferranti-Dege's stores and find out how.



Photomic F2

Ferranti-Dege
1252 Mass. Ave. 547-8600
Ferranti-Dege, Too
1300 Mass. Ave. 547-8600
Harvard Square, Cambridge

家酒南湖

Hunan Restaurant

MANDARIN SZECHUEN CUISINE

700 Massachusetts Ave.
Cambridge, Mass. 02139

Phone (617) 876-7000
(617) 876-7001

COLLEEN'S CHINESE CUISINE

792-794 Main St., Cambridge
(off Mass. Ave. between Central &
Kendall Square) 661-1660 391-7611

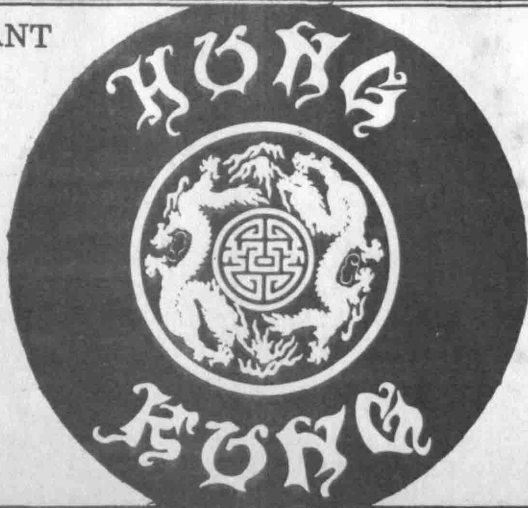
Luncheon Special Call for Reservations

Best in Quality and Quantity Mandarin and Szechuan

HONG KONG RESTAURANT

Harvard Square
1236 Mass Ave
COCKTAIL
LOUNGE
Chinese and
Polynesian foods
864-5311, 864-5263

Daily Luncheon Specials



HONG KONG II

Porter Square
Across from
Porter Square
Shopping Center
1900 Mass Ave
864-5150
864-5151

Daily Luncheon Specials

the mit musical theatre guild proudly presents



Celebration

a musical by tom jones and harvey schmidt

fri & sat nov 7 & 8
thur, fri & sat nov 13, 14 & 15

kresge auditorium, mit 8:00pm
tickets \$3,50 (\$2.50 with mit id)

for reservations call 253-6294

tickets on sale in building 10 lobby