

Computational Biorheology of Human Blood Flow in Health and Disease

DMITRY A. FEDOSOV,¹ MING DAO,² GEORGE EM KARNIADAKIS,³ and SUBRA SURESH⁴

¹Institute of Complex Systems and Institute for Advanced Simulation, Forschungszentrum Jülich, 52425 Jülich, Germany; ²Department of Materials Science and Engineering, Massachusetts Institute of Technology, Cambridge, MA 02139, USA; ³Division of Applied Mathematics, Brown University, Providence, RI 02912, USA; and ⁴Department of Materials Science and Engineering and Department of Biomedical Engineering, Carnegie Mellon University, Pittsburgh, PA 15213, USA

(Received 12 July 2013; accepted 2 October 2013; published online 12 October 2013)

Associate Editor Gang Bao oversaw the review of this article.

Abstract—Hematologic disorders arising from infectious diseases, hereditary factors and environmental influences can lead to, and can be influenced by, significant changes in the shape, mechanical and physical properties of red blood cells (RBCs), and the biorheology of blood flow. Hence, modeling of hematologic disorders should take into account the multiphase nature of blood flow, especially in arterioles and capillaries. We present here an overview of a general computational framework based on dissipative particle dynamics (DPD) which has broad applicability in cell biophysics with implications for diagnostics, therapeutics and drug efficacy assessments for a wide variety of human diseases. This computational approach, validated by independent experimental results, is capable of modeling the biorheology of whole blood and its individual components during blood flow so as to investigate cell mechanistic processes in health and disease. DPD is a Lagrangian method that can be derived from systematic coarse-graining of molecular dynamics but can scale efficiently up to arterioles and can also be used to model RBCs down to the spectrin level. We start from experimental measurements of a single RBC to extract the relevant biophysical parameters, using single-cell measurements involving such methods as optical tweezers, atomic force microscopy and micropipette aspiration, and cell-population experiments involving microfluidic devices. We then use these validated RBC models to predict the biorheological behavior of whole blood in healthy or pathological states, and compare the simulations with experimental results involving apparent viscosity and other relevant parameters. While the approach discussed here is sufficiently general to address a broad spectrum of hematologic disorders including certain types of cancer, this paper specifically deals with results obtained using this computational framework for blood flow in malaria and sickle cell anemia.

Keywords—Hematologic disorders, Dissipative particle dynamics, Coarse-graining, Malaria, Sickle cell anemia.

INTRODUCTION

Parasitic infections or genetic factors can drastically change the viscoelastic properties and the biconcave (discocyte) shape of red blood cells (RBCs).³⁶ For example, the parasite *Plasmodium falciparum* that invades the RBCs (Pf-RBCs) of most malaria patients markedly affects the RBC membrane properties resulting in up to a ten-fold increase of its shear modulus and a spherical shape in the later stages of the intra-cell parasite development.³⁶ Sickle cell anemia is another blood disorder caused by the polymerization of the hemoglobin inside the RBCs, which, in turn, leads to dramatic changes in their shape and deformability. These changes combined with the increased internal viscosity affects the flow of sickled RBCs through the post-capillary venules leading to flow occlusion.^{36,77} Other hereditary diseases with similar effects are spherocytosis and elliptocytosis.¹⁴ In the former, RBCs become spherical with reduced diameter and carry much more hemoglobin than their healthy counterparts. In the latter, RBCs are elliptical or oval in shape and exhibit reduced deformability.

These hematologic disorders, despite their differing origins as infectious diseases arising from external vectors or as hereditary abnormalities ascribed to genetic defects, also reveal some common characteristics in terms of the remodeling of cytoskeleton. Such molecular remodeling of the spectrin cytoskeleton induces a change in the structure and viscoelastic properties of individual RBCs. Therefore, studying the rheological properties of blood and its components such as the RBC can aid greatly in the understanding of many major diseases. To this end, new advanced experimental tools are very valuable in obtaining the biophysical properties of single RBCs in health and disease, which are required in formulating multiscale

Address correspondence to George Em Karniadakis, Division of Applied Mathematics, Brown University, Providence, RI 02912, USA. Electronic mail: gk@dam.brown.edu

methods for modeling blood flow *in vitro* and *in vivo*. Specifically, advances in experimental techniques now allow measurements down to the nanometer scale, and include micropipette aspiration,^{39,159} RBC deformation by optical tweezers,^{21,76,147} optical magnetic twisting cytometry,¹³¹ three-dimensional measurement of membrane thermal fluctuations,^{118,124} and observations of RBCs immersed in both shear and in pressure-driven flows.^{2,66,135,148,154} Micropipette aspiration and optical tweezers techniques tend to deform the entire RBC membrane directly, while optical magnetic twisting cytometry and measurements of membrane thermal fluctuations probe the membrane response locally.

Several numerical models have been developed recently including a continuum description^{46,52,69,125} and a discrete approximation on the spectrin molecular level^{38,96} as well as on the mesoscopic scale.^{42,44,115,122} Some of the models suffer from the assumption of a purely elastic membrane, and are able to capture only the RBC mechanical response, but cannot quantitatively represent realistic RBC rheology and dynamics. Fully continuum (fluid and solid) models often suffer from non-trivial coupling between nonlinear solid deformations and fluid flow with consequential computational expense. Semi-continuum models^{46,125} of deformable particles, which use immersed boundary or front-tracking techniques, can be quite efficient. In these models, a membrane is represented by a set of points which are tracked in Lagrangian description and are coupled to an Eulerian discretization of fluid domain. However, these models employ the same external and internal fluids and do not take into account the existing viscosity contrast between them. In addition, continuum models omit some mesoscopic and microscopic scale phenomena such as membrane thermal fluctuations, which affect RBC rheology and dynamics.¹¹⁴ On the microscopic scale, detailed spectrin molecular models of RBCs are limited by the demanding computational expense. Therefore, we will focus here on an accurate mesoscopic modeling of RBCs.

There exist a few mesoscopic methods^{42,44,115,122} for modeling deformable particles such as RBCs. Dzwinel *et al.*⁴⁴ model RBCs as a volume of elastic material having an inner skeleton. This model does not take into account the main structural features of the RBC, namely a membrane filled with a fluid, and therefore it cannot accurately capture the dynamics of RBCs, such as the observed tumbling and tank-treading behavior in shear flow.^{2,142} Three other methods^{42,115,122} employ a conceptually similar approach to the method we will present here, where the RBC is represented by a network of nonlinear viscoelastic springs in combination with bending rigidity and constraints for surface-area

and volume conservation. Dupin *et al.*⁴² coupled the discrete RBC to a fluid described by the Lattice Boltzmann method¹⁴⁵ obtaining promising results. However, this model does not consider external and internal fluids separation, membrane viscosity, and thermal fluctuations. Noguchi and Gompper¹¹⁵ employed Multiparticle Collision Dynamics¹⁰² and presented encouraging results on vesicles and RBCs; however, they do not use realistic RBC properties and probe only very limited aspects of RBC dynamics. Pivkin and Karniadakis¹²² used dissipative particle dynamics (DPD)⁷⁹ for a multiscale RBC model which will be the basis of the general multiscale RBC (MS-RBC) model we will present here, following the earlier versions developed in Fedosov *et al.*⁵⁶ The MS-RBC model described here is able to successfully capture RBC mechanics, rheology, and dynamics. Potential membrane hardening or softening as well as the effects of metabolic activity can also be incorporated into the model leading to predictive capabilities of the progression of diseases such as malaria. Theoretical analysis of the hexagonal network yields its mechanical properties, and eliminates the need for *ad hoc* adjustments of the model parameters. Such models can be used to represent seamlessly the RBC membrane, cytoskeleton, cytosol, the surrounding plasma and even the parasite.

This paper is organized as follows: In “**Materials and Methods**” section, we review the basic DPD theory and the MS-RBC models. In “**Healthy Blood Flow**” section, we present rheology results of healthy blood flow in capillaries and arterioles, and comparisons with available experimental observations. In “**Diseased Blood Flow**” section, we review recent results on modeling blood flow in malaria and in sickle cell anemia. We conclude in “**Discussion**” section with a brief summary and a discussion on the potential of multiscale modeling in predicting the onset and progression of other hematologic disorders.

MATERIALS AND METHODS

Fluid Flow Modeling

Fluid flow modeling is referred here to the modeling of the Newtonian solvent flow, which mimics blood plasma. In particle-based methods a fluid is represented by a collection of interacting particles, which recovers hydrodynamics on the length scales several times larger than the particle size. Examples include molecular dynamics,⁶ DPD,^{51,75,79} multi-particle collision dynamics,^{74,102} and smoothed particle hydrodynamics (SPH).^{99,110} The DPD system consists of N point particles, which interact through three pairwise

forces—conservative (C), dissipative (D), and random (R)—such that the force on particle i is given by

$$\mathbf{F}_i = \sum_j \mathbf{F}_{ij} = \sum_j \left(\mathbf{F}_{ij}^C + \mathbf{F}_{ij}^D + \mathbf{F}_{ij}^R \right), \quad (1)$$

where the sum runs over all neighboring particles j within a certain cutoff radius. The conservative force mainly controls fluid compressibility, while the dissipative force governs fluid viscosity. In addition, the pair of dissipative and random forces forms a thermostat such that an equilibrium temperature can be imposed.⁵¹

Recently, the smoothed dissipative particle dynamics (SDPD) method⁵⁰ has been proposed, which has several advantages over the conventional DPD. The SDPD method is derived from SPH in combination with a thermostat similar to that used in DPD. In comparison to DPD, the SDPD method allows one to directly input fluid transport coefficients (e.g., viscosity) and to select an arbitrary equation of state, and therefore to have full control over fluid compressibility. Other methods for fluid flow modeling include continuum approaches such as the Navier–Stokes equation or its modifications.¹⁶¹ In addition, the other two methods which are quite popular for fluid flow modeling are the lattice Boltzmann method (LBM) method¹⁴⁵ and Brownian dynamics.⁴⁹

Modeling Blood Cells

Blood cells are modeled by a flexible membrane with constant area and volume. As an example, the RBC membrane is represented by a network of springs, which corresponds to a triangulation on the membrane surface.^{34,38,43,56,57,96,113,122} The free energy for each cell is given by

$$V_{\text{cell}} = V_s + V_b + V_{a+v}, \quad (2)$$

where V_s is the spring's potential energy, V_b is the bending energy, and V_{a+v} corresponds to the area and volume conservation constraints. The V_s contribution supplies proper cell membrane elasticity. A “dashpot” is attached to each spring, and therefore, the spring forces are a combination of conservative elastic forces and dissipative forces, which provide membrane viscous response similar to a membrane viscosity. The bending energy mimics the bending resistance of the cell membrane, while the area and volume conservation constraints mimic area-incompressibility of the lipid bilayer and incompressibility of a cytosol, respectively. More details on the cell model can be found in Fedosov *et al.*^{56,57}

Linear analysis for a regular hexagonal network allows us to relate the model parameters uniquely with

the network macroscopic properties, see Fedosov *et al.*^{56,57} for details. Thus, in practice, the given macroscopic cell properties serve as an input to be used to calculate the necessary mesoscopic model parameters without any manual adjustment. We also employ a “stress-free” model,^{56,57} which eliminates existing artifacts of irregular triangulation. It is obtained by computational annealing such that each spring assumes its own equilibrium spring length adjusted to be the edge length after triangulation. Both internal and external fluids are simulated by a collection of free DPD particles and are separated by the cell membrane through bounce-back reflections at the membrane surface. Moreover, a dissipative force between fluid particles and membrane vertices is set properly to account for the no-slip boundary conditions at the membrane surface. More details on boundary conditions can be found in Fedosov *et al.*^{56,57}

The other class of methods for cell membrane modeling corresponds to a continuum representation. Thus, cells are modeled using some type of a constitutive equation from solid mechanics. Examples here include boundary-integral formulation^{125,165} and finite element discretization.¹⁰⁰ More details on RBC and blood flow modeling can be found in recent reviews.^{62,85,97}

HEALTHY BLOOD FLOW

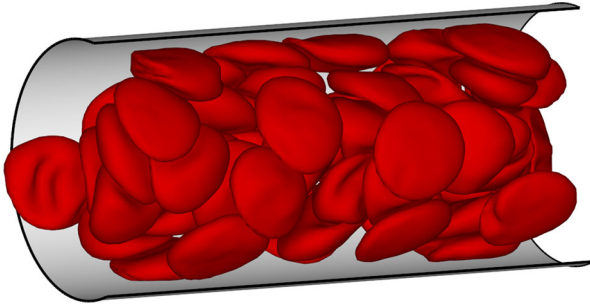
Blood flow in microcirculation¹²³ affects a number of vital processes in the human body including oxygen delivery to tissues, removal of waste products, immune response, haemostasis, *etc.* Detailed experimental measurements of blood flow *in vivo* down to a cell level are very difficult and often not feasible. This has motivated a large worldwide scientific effort to derive reliable numerical models of blood flow in order to study blood hydrodynamics in vessel networks, its rheology, and the effect on various blood-affected processes. Here, we will mainly focus on mesoscopic modeling of blood flow down to the single blood cell level; see also a recent review.⁶² We also present typical average plasma and RBC properties in Table 1.

Blood Flow in Tubes

Blood flow in tubes or rectangular channels is a relatively simple problem which mimics the main characteristics of blood flow in a *in vivo* vessel. It allows the quantification of blood flow resistance for various conditions by estimating such factors as the hematocrit, flow rate, and RBC aggregation. This model also permits quantitative simulation of such processes as the migration, deformation, and dynamics

TABLE 1. Typical average plasma and RBC properties in health.

Plasma viscosity	0.0012 Pa · s
RBC cytosol	0.006 Pa · s
Temperature	37 °C
RBC membrane Young's modulus	18.9×10^{-6} N/m
RBC membrane bending rigidity	3.0×10^{-19} J
RBC membrane viscosity	2.2×10^{-8} Pa · s · m

**FIGURE 1. A simulation snapshot of blood flow (RBCs only) in a tube of a diameter $D = 20 \mu\text{m}$ and at tube hematocrit $H_t = 0.45$. The thin layer between the RBC core and the tube walls is the cell-free layer.**

of single cells within the flow. As an example, Fig. 1 shows a snapshot of flow of blood in a tube with diameter $D = 20 \mu\text{m}$.

Fahraeus Effect

Fahraeus performed *in vitro* experiments on blood flowing through glass tubes⁵³ and found an elevated value of discharge hematocrit (H_d), defined as the RBC volume fraction exiting a tube per unit time, in comparison with the RBC concentration within a tube called tube hematocrit (H_t). This finding, which is called the Fahraeus effect, is a consequence of the cross-stream migration of RBCs in tube flow. RBCs in blood flow migrate away from the vessel walls towards the centerline^{28,72} due to hydrodynamic interactions with the walls and their deformability^{4,19,40,108}; such interactions are also referred to as *lift force*. Crowding of RBCs around the tube center results in their faster motion along the tube with respect to the average blood flow velocity, thus leading to an increased H_d value measured experimentally.

The Fahraeus effect is one of the standard tests for any blood flow model, and has been modeled in simulations of blood flow in rectangular channels⁴³ and in tubes.^{59,93} In contrast to experiments,^{53,128} where H_d is the main controlled parameter and H_t has to be measured, in simulations H_t is an input and corresponds to the volume fraction of RBCs placed within the channel, while H_d is computed. In order to compute the

ratio H_t/H_d in simulations a simple mass balance can be employed in flow, which yields

$$\frac{H_t}{H_d} = \frac{\bar{v}}{v_{\text{RBC}}}, \quad (3)$$

where \bar{v} is the average flow velocity and v_{RBC} is the average velocity of red cells. Figure 2a shows the ratio H_t/H_d for two hematocrits and various tube diameters D . The simulation results⁹³ are compared with the empirical fits to experimental data on blood flow in glass tubes.¹²⁸ A strong effect of RBC migration to the tube center on the discharge hematocrit is observed for tubes with diameters of up to about $200 \mu\text{m}$. For larger tube diameters, the layer next to the wall void of RBCs, called the *cell-free layer* (CFL), becomes rather small in comparison with D , and therefore the Fahraeus effect is negligible.

Fahraeus–Lindqvist Effect

Another phenomenon directly related to RBC migration towards a vessel centerline and the formation of a CFL next to the wall is the Fahraeus–Lindqvist effect,⁵⁵ describing a decrease in blood flow resistance with decreasing tube diameter.¹²⁸ The flow resistance is affected by the CFL, which serves as an effective lubrication layer for relatively viscous flow at the core consisting primarily of RBCs. For large tube diameters the CFL thickness is small with respect to D , and therefore the bulk blood viscosity is essentially measured. As the tube diameter is reduced, the CFL thickness becomes more significant with respect to D leading to an effective decrease in flow resistance. The blood flow resistance in glass tubes is quantified by an effective viscosity, termed the *apparent blood viscosity*, using the Poiseuille law in tubes

$$\eta_{\text{app}} = \frac{\pi \Delta P D^4}{128 Q L}, \quad (4)$$

where $\Delta P/L$ is the pressure drop along the tube length L and Q is the volumetric flow rate. For convenience, experimental results¹²⁸ are presented in terms of the relative apparent viscosity defined as

$$\eta_{\text{rel}} = \frac{\eta_{\text{app}}}{\eta_0}, \quad (5)$$

where η_0 is the blood plasma viscosity. Thus, η_{rel} characterizes the effective viscosity of blood with respect to that of plasma.

Similar to the Fahraeus effect, the Fahraeus–Lindqvist effect also serves as a standard validation test for any blood flow model. Figure 2b shows the relative apparent viscosity for different H_t values and tube diameters, where the solid curves are the fits to experimental measurements¹²⁸; the symbols correspond

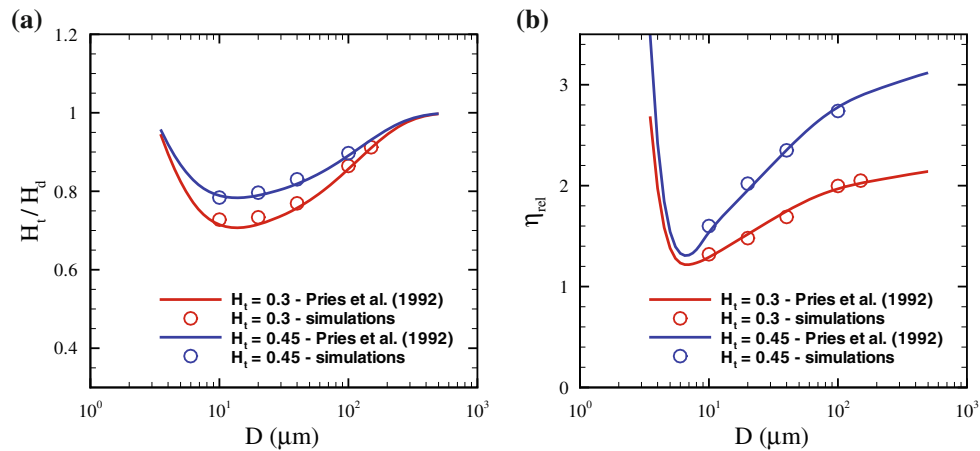


FIGURE 2. (a) Ratio of tube (H_t) to the discharge (H_d) hematocrit, and (b) Relative apparent viscosity (η_{rel}), for different H_t values and tube diameters D . The symbols correspond to the DPD simulations in Lei *et al.*,⁹³ while the curves are the fits to experimental data.¹²⁸ The figure is adopted with permission from Lei *et al.*⁹³

to simulation results.⁹³ The minimum value of η_{rel} is found for the tube diameter of $D_m = 7-8 \mu\text{m}$. In tubes with diameters smaller than D_m , RBCs have to strongly deform and squeeze through the tubes attaining bullet-like shapes,^{3,140,155} which leads to a steep increase in the relative apparent viscosity. On the other hand, when $D > D_m$, the thickness of the CFL in comparison with the tube diameter becomes smaller, leading to an effective viscosity increase.

The Fahraeus–Lindqvist effect has been quantitatively captured in 3D blood flow models in cylindrical vessels^{5,59,68,93} as well as in rectangular channels.^{41,43} Furthermore, this effect has also been quantitatively predicted by 2D blood flow models⁹ and by the simplified blood models,^{84,105,116} which do not properly capture RBC membrane deformability. This clearly indicates that the deformability and dynamics of individual cells do not significantly affect the flow resistance. Thus, it appears computationally advantageous to divide blood flowing in tubes into two regions: (i) a relatively viscous flow core consisting mainly of cells, and (ii) the CFL region devoid of RBCs. This assumption leads to the so-called two-phase model^{28,71,93,138} for blood flow in tubes or vessels, where the flow is divided into core and near-wall regions having different viscosities. Although such models describe well the flow resistance in straight tubes, they might not provide realistic simulations in complex geometries (e.g., vessel networks) due to spatial variability of the CFL⁸⁸ and non-trivial partitioning of RBCs within the network.¹³⁰

Finally, the blood flow resistance depends on flow rate and aggregation interactions between RBCs. Experimental data compiled in Pries *et al.*¹²⁸ and simulations of blood flow in small tubes⁶⁸ suggest that the dependence of flow resistance on flow rate disappears at sufficiently high flow rates exceeding the

pseudo-shear rate $\dot{\gamma} = \bar{v}/D$ of approximately 50 s^{-1} . In fact, fits to experimental data presented in Fig. 2 are based solely on experimental studies, where the pseudo-shear rates are higher than 50 s^{-1} .¹²⁸ As the flow rate is decreased such that $\dot{\gamma} < 50 \text{ s}^{-1}$, the blood flow resistance increases for RBC suspensions^{68,134} without aggregation interactions between cells. RBC aggregation in whole blood occurs in equilibrium or at sufficiently low shear rates. Viscometric measurements of whole blood viscosity^{25,106,141} have shown a steep viscosity increase for shear rates below 10 s^{-1} due to RBC aggregation in comparison with analogous non-aggregating RBC suspension. Thus, the flow resistance of blood in tubes is not affected by RBC aggregation for sufficiently high flow rates, and this has been confirmed experimentally^{28,134} and in simulations.⁹³ At sufficiently low flow rates, experimental studies^{28,54,111,134} report a decrease in the relative apparent viscosity due to RBC aggregation, but this has not been yet explored in simulations.

Cell-Free Layer

The CFL is a layer of blood plasma near the wall that is devoid of RBCs due to their migration to the vessel center. The viscosity in the CFL region is equal to that of blood plasma, while the viscosity in the tube-core region populated with RBCs is several times larger. Hence, the formation of CFL leads to a better efficiency for the RBC core to flow resulting in the aforementioned Fahraeus and Fahraeus–Lindqvist effects. The thickness of CFL δ may serve as an alternative indicator for blood flow resistance. In *in vitro*^{17,134} and *in vivo*^{88,101,163} experiments, the outer edge of the RBC core has been tracked to calculate its average position and deduce the CFL thickness. A similar approach has also been employed in

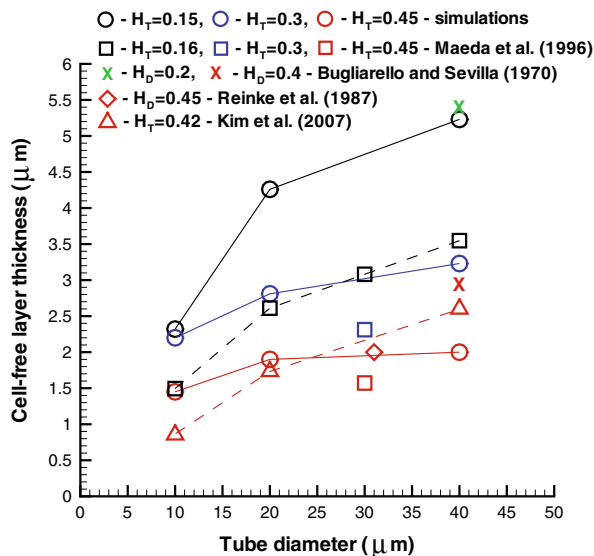


FIGURE 3. Cell-free layer thickness for different hematocrits and tube diameters. The figure is adopted with permission from Pan *et al.*¹¹⁷

simulations^{43,59,93,116} and a comparison of CFL thicknesses measured experimentally and in simulations is shown in Fig. 3. The simulations predict an increase in δ with tube diameter. However, the ratio of δ/D in fact decreases,^{41,93} which is consistent with the Fahraeus and Fahraeus–Lindqvist effects. The simulated CFLs show only partial agreement with the corresponding experimental data in Fig. 3. The agreement is good when compared with *in vitro* experiments on blood flow in glass tubes,^{17,134} while for the *in vivo* experimental data^{88,101} noticeable discrepancies exist especially at low H_t values. The variability in CFL thicknesses also exists across various CFL experimental measurements,^{88,101,163} so the agreement of the simulation results with *in vivo* data is expected to be qualitative. Several factors may contribute to the variability of *in vivo* measurements of CFL and the discrepancies with simulations including the glycocalyx layer at vessel walls, variations in vessel diameter and length, close proximity of the site of CFL measurements to vessel bifurcations, vessel elasticity, and spatial resolution of the recorded data.^{47,59,88,127}

An alternative means to compute the thickness of CFL in simulations is to analyze the local hematocrit distribution (see Fig. 4a), which drops quickly as we exit the RBC core region and enter the CFL moving along the tube radial direction.^{9,41,68} The simulation of non-aggregating RBC suspension in tube flow⁶⁸ showed that δ increases as the pseudo-shear rate is increased from 0 to approximately 50 s^{-1} . This result indicates that the flow resistance is decreasing in agreement with the experimental measurements in

Reinke *et al.*¹³⁴ For flow rates above 50 s^{-1} , the CFL thickness remains nearly constant,⁶⁸ which supports the argument that the flow resistance becomes independent of the flow rate as discussed in “Fahraeus–Lindqvist Effect” section. In contrast to a constant δ for high flow rates, *in vivo* experiments⁸⁸ and 3D simulations⁵⁹ have shown a mild decrease in the CFL thickness with increasing flow rate. Finally, the effect of RBC aggregation, which is important only at low shear rates, leads to an increase in the CFL thickness as the flow rate is reduced due to the possibility to form a more compact RBC core of the flow.^{89,134} Consequently, RBC aggregation results in a lower flow resistance as the flow rate is decreased. Note that RBC aggregability reverses the trend of the flow resistance for low flow rates in comparison with a non-aggregating suspension; the RBC aggregation effect has not been yet investigated by simulations.

RBC Distribution and Deformation in Flow

Migration of RBCs in blood flow leads to a variation in local RBC density and hematocrit. Departures from normal blood flow characteristics are potential indicators of disease pathology. For tube flow, the local hematocrit $H(r)$ is defined as the volume fraction of RBCs within an annular region with the radius r and thickness Δr . Figure 4a presents the local hematocrit distributions for various H_t values and tube diameters. For small tube diameters, $H(r)$ in the tube center is significantly larger than H_t in agreement with the simulation results in Freund and Orescanin⁶⁸ Thus, RBCs are mainly located at the tube center, however their dynamics and structure depend on H_t .⁹³ At low H_t , RBCs attain a parachute shape and move in a train-like arrangement, which has been also reported in McWhirter *et al.*¹⁰⁴ In contrast, at high H_t , RBCs arrange into the so-called zig-zag mode found experimentally in Gaegtgens *et al.*⁷⁰ and in simulations.¹⁰⁴ As the tube diameter is increased, the local hematocrit converges towards the H_t value. However, for low H_t a peak in $H(r)$ may still exist around the tube center due to close packing of RBCs within the centerline region where local shear rates are small. For tube diameters $D \gtrsim 200 \mu\text{m}$ a nearly homogeneous distribution of RBCs is expected, and therefore a continuum approximation for blood flow in large tube is appropriate.⁹³

Quantitative analysis of local RBC deformation in tube flow can be conveniently performed using the RBC gyration tensor.¹⁰³ Eigenvalues of the gyration tensor characterize cell shape along the directions defined by the tensor eigenvectors. The distributions of the largest eigenvalue λ_{max} for the RBC across the tube are shown in Fig. 4b indicating that RBCs are slightly compressed in the tube center and get stretched more

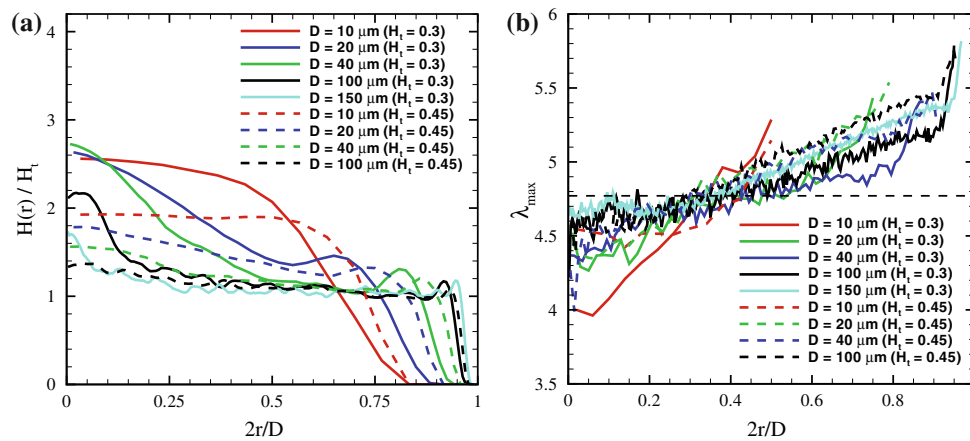


FIGURE 4. (a) Local hematocrit values in blood flow across the tube for different H_t values and tube diameters. (b) Local RBC deformation in tube flow characterized by the largest eigenvalue (λ_{\max}) of the RBC gyration tensor for different tube diameters and H_t values. The horizontal dashed line denotes the equilibrium value of λ_{\max} equal to approximately 4.77. The figure is adopted with permission from Lei *et al.*⁹³

and more by the flow as we approach the CFL region. The λ_{\max} distributions can be qualitatively divided into the three regions: i) a centerline region, where λ_{\max} is nearly constant; ii) the region between the tube center and CFL, where λ_{\max} slowly increases; iii) a region next to the CFL, where λ_{\max} steeply increases. Similar conclusions for RBC deformation in tube flow have also been reported in Alizadehrad *et al.*⁵ Finally, for sufficiently large D the function of $\lambda_{\max}(r)$ converges to a common curve, and therefore the dependence on tube diameter disappears.

Blood Rheology

A major aim of computational cell biorheology is to predict the macroscopic flow properties of a suspension (e.g., shear viscosity, yield stress) from the mesoscopic properties of the constituent particles (e.g., size, deformability, inter-particle interactions). Bulk blood properties under shear have been measured in a number of laboratories^{25,106,121,137,141,150} predicting a non-Newtonian shear thinning behavior. Here, we draw attention to two different sets of viscometric measurements. The first set corresponds to whole blood, where no significant changes are introduced to freshly drawn blood except for a necessary initial stabilization with an anti-coagulant. Such procedure for sample preparation leaves the aggregation properties among RBCs virtually unaffected, and therefore cell aggregates, known as *rouleaux*, can be observed.^{23,24,106,107} The second set of viscometric measurements corresponds to the so-called non-aggregating RBC suspensions, where RBCs are washed and re-suspended into a neutral solvent. RBC aggregation interactions strongly depend on the nature and concentration of available

proteins or polymers^{24,107} and can be triggered by adding them to non-aggregating RBC suspensions.^{107,126,144} Whole blood is also known to exhibit a yield stress^{27,29,106} defined as a threshold stress that must be exceeded for flow to begin.

Reversible Rouleaux Formation

Aggregation interactions among RBCs lead to the formation of rouleaux structures in equilibrium or in relatively weak flows. A rouleaux resemble stacks of coins as illustrated in Fig. 5 showing a simulation snapshot in equilibrium. There exist two different hypotheses for the RBC aggregation in polymer or protein solutions: (i) the bridging model, which suggests that cross-linking between cells may be achieved by polymer adsorption or adhesion on a cell surface,^{16,22} and (ii) the depletion model, which suggests that RBC aggregation arises from depletion interactions.^{13,112} In equilibrium, rouleaux formation consisting of a few RBCs is first observed, followed by further coalescence into branched rouleaux networks.^{106,136,137} In flow, the large rouleaux break up into smaller ones. However, at sufficiently high shear rates, rouleaux structures no longer exist.¹⁶⁸ The aggregation process is reversible once the shear rate is decreased.

RBC aggregation has been simulated in 2D,^{11,158,164} where aggregation and disaggregation of several cells in shear flow has been studied. The effect of RBC aggregation on blood rheology has also been investigated in 3D simulations.⁹⁸ However, the marked viscosity increase at low shear rates has not been captured due to the very small size of a simulated system with only six RBCs. Finally, recent 3D simulations⁶³ led to

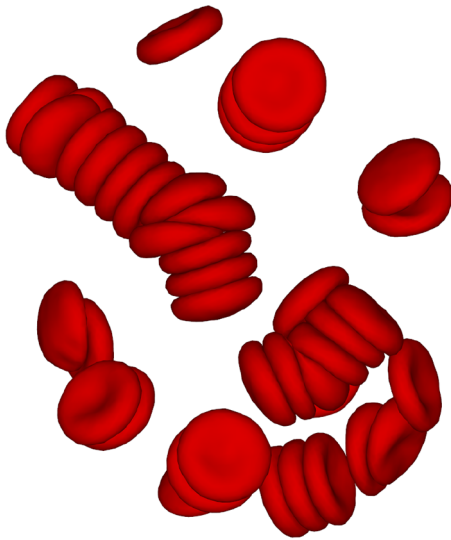


FIGURE 5. A simulation snapshot showing sample RBC-rouleaux structures in equilibrium.

quantitative predictions for the strength of RBC aggregation and its effect on blood viscosity.

Blood Viscosity and Yield Stress

As noted earlier, the viscosity of whole blood is strikingly different from that of non-aggregating RBC suspension due to aggregation interactions between RBCs. Figure 6 presents the relative viscosity of blood, defined as the ratio of RBC suspension viscosity to the solvent viscosity, vs. shear rate at $H_t = 0.45$. The blood viscosity was calculated in shear flow⁶³ using the MS-RBC model.⁵⁶ The model results compare very well with the experimental viscometric measurements.^{25,106,141} The correct predictions of viscosity by the model facilitates calculation of the strength of aggregation forces between two RBCs, which appears to be in the range of 3.0 pN to 7 pN. Note that these forces are much smaller than those used in single RBC stretching tests with optical tweezers.¹⁴⁷

Whole blood is considered a fluid with a yield stress (a threshold stress for flow to begin),^{27,29,106,121} which is usually calculated by extrapolation of available viscometric data to the zero shear rate. For blood the Casson's equation²⁰ is often used

$$\tau_{xy}^{1/2} = \tau_y^{1/2} + \eta^{1/2} \dot{\gamma}^{1/2}, \quad (6)$$

where τ_{xy} is the shear stress, τ_y is a yield stress and η is the suspension viscosity at large $\dot{\gamma}$. The Casson's relation has been used to compute yield stress for pigment-oil suspensions,²⁰ Chinese ovary hamster cell suspensions,⁸¹ and blood.¹⁰⁷ Figure 7 shows the simulation results from Fedosov *et al.*⁶³ where computed shear stresses are extrapolated to the zero shear rate using a polynomial fit

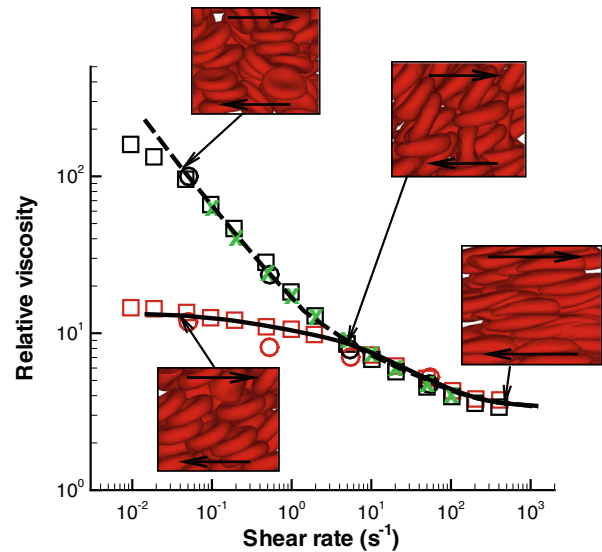


FIGURE 6. Non-Newtonian relative viscosity of blood (the cell suspension viscosity divided by the solvent viscosity) as a function of shear rate at $H_t = 0.45$. The simulation curves are: dashed—whole blood model; solid—non-aggregating RBC suspension. The experimental data are as follows: Whole blood: green crosses—Merril *et al.*,¹⁰⁶ black circles—Chien *et al.*,²⁵ black squares—Skalak *et al.*,¹⁴¹ Non-aggregating RBC suspension: red circles—Chien *et al.*,²⁵ red squares—Skalak *et al.*¹⁴¹ The insets show simulation snapshots at different shear rates. The figure is reproduced with permission from Fedosov *et al.*⁶²

in Casson coordinates. The extrapolated τ_y values are virtually zero for non-aggregating RBC suspensions, while the presence of RBC aggregation leads to a non-zero yield stress. The simulation results support the hypothesis that whole blood has a non-zero yield stress due to aggregation interactions between RBCs.^{27,29,106} Moreover, the simulated values of τ_y lie within the range of 0.0015 Pa and 0.005 Pa for yield stress measured experimentally.¹⁰⁶

Another aspect which has been discussed in Fedosov *et al.*,⁶³ is a link between RBC suspension macroscopic properties and its microscopic characteristics such as cell structure, deformation, and dynamics. The analysis of the suspension's structure has confirmed that a steep rise in viscosity for the aggregating RBC suspension at low shear rates is due to the existence of small aggregates consisting of 2–4 RBCs. As the shear rate is increased, the suspension's structure completely disappears, and therefore the viscosity at high shear rates becomes independent of RBC aggregation. Furthermore, the shear-thinning property of a non-aggregating RBC suspension is strongly associated with the transition of RBCs from tumbling to the tank-treading dynamics^{2,142} and the alignment of tank-treading RBCs with the shear flow. Simulations of a single elastic oblate-shape capsule in shear flow,¹⁰ which mimic a dilute solution, have also shown a shear thinning behavior which mainly occurs

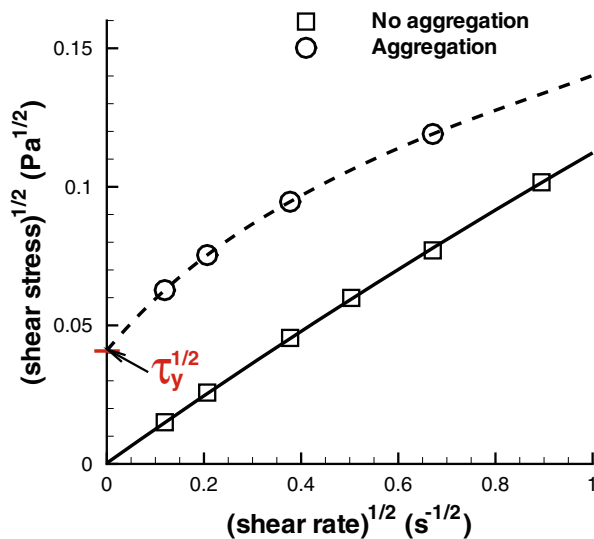


FIGURE 7. Casson plots for the extrapolated yield stress (using a polynomial fit) for simulated MS-RBC suspensions with and without aggregations at $H_t = 0.45$. The figure is reproduced with permission from Fedosov *et al.*⁶²

within the capsule tank-treading regime. Another simulation study of dense near-spherical capsules²⁶ have also shown a slight shear-thinning behavior due to the deformation of capsules in shear flow. In addition, normal stress differences have been computed for the capsule suspensions.

Numerical studies of the rheology of dense suspensions of deformable particles and cells are still rather limited. Such simulations can be used to investigate a wide class of complex fluids (e.g., cell, vesicle, and capsule suspensions) and to tune their properties to modulate cell behavior. In addition, such 3D high-fidelity simulations will allow one to study in detail the connection between macroscopic and microscopic properties of such suspensions.

Margination of White Blood Cells and Platelets

Margination of different solutes (e.g., white blood cells, platelets, drug carriers) in blood flow is the migration process of the solutes towards vessel walls. The margination process is essential for many blood solutes in order to perform their function, as they come into contact with vessel walls when necessary. For example, white blood cells (WBC) have to marginate towards the walls^{12,65,73} in order to be able to efficiently adhere to vascular endothelium and eventually transmigrate into the surrounding tissues.¹⁴³ The margination mechanism is mediated by RBCs, which migrate towards the vessel center^{28,72} due to the hydrodynamic lift force,^{4,19,40,108} and effectively push out various solutes from the central region into the CFL. More precisely, the margination mechanism is a consequence of

the competition between lift forces on RBCs and blood solutes, and their interactions in flow. Recently, a margination theory for binary suspensions^{90,91} has been proposed through two mechanisms: (i) wall-induced particle migration due to lift force, and (ii) particle displacement due to pair collisions of different solutes or their interactions in flow; the latter mechanism is also often referred to as shear-induced diffusion.

White Blood Cell Margination

WBC margination has been studied in a number of experiments^{1,12,65,73,83,119} and simulations.^{61,67,146} Several blood and flow properties contribute to WBC margination including H_t , flow rate, RBC aggregation, and vessel geometry. *In vivo* experiments on mesenteric venules of rat⁶⁵ showed an increase of WBC adhesion rate (and consequently margination) for high $H_t \geq 0.45$ as the flow rate was decreased. A recent microfluidics study⁸³ concluded that the most efficient WBC margination occurs within intermediate $H_t \approx 0.2-0.3$, while at lower or higher H_t values WBC margination is attenuated. In contrast, *in vitro* experiments in glass tubes¹ and 2D simulations⁶⁷ have reported no significant sensitivity of WBC margination on blood hematocrit. The effect of flow rate on WBC margination is consistent across various studies,^{61,65,67,83,119} which show strong WBC margination at low flow rates, characteristic for venular blood flow. Furthermore, RBC aggregation leads to an enhancement of WBC margination,^{1,61,65,83,119} while the effect of complex geometries (e.g., vessel contraction, expansion, and bifurcation) on WBC margination has a very limited interpretation so far. The 2D simulation study¹⁴⁶ and microfluidic experiments⁸³ mimicking a vessel expansion suggest that the WBC margination is enhanced in post-capillary venular expansions. Finally, a combined *in vitro* and *in vivo* study of blood flow around bifurcations¹⁵⁶ have shown preferential adhesion of WBCs near bifurcations.

Recent 2D simulations⁶¹ provided a systematic study of WBC margination for various conditions including flow rate, H_t , WBC deformability, and RBC aggregation, and attempted to reconcile existing contradicting observations. Using blood flow simulations, WBC center-of-mass distributions were computed for various flow rates and H_t values with an example shown in Fig. 8. Clearly, the strongest WBC margination is found within a range of intermediate $H_t = 0.25-0.35$, while at lower and higher H_t values WBC margination is attenuated. The weak WBC margination at low H_t has been expected due to low concentration of RBCs. Surprisingly, however, no significant WBC margination at high H_t was observed. The mechanism of WBC margination attenuation at high H_t appeared to be also related to the presence of RBCs in flow. Thus, at low enough H_t the

region in front of a margined WBC in blood flow remains virtually void of RBCs as they pass above the slowly moving WBC. As we increase H_t to a certain value, RBCs may often enter that region due to high cell crowding, and effectively lift off the WBC away from the walls.⁶¹ This lift-off mechanism is different from the lift force due to cell-wall hydrodynamic interactions and is governed by the particulate nature of blood.

Having calculated WBC distributions, one can define a WBC margination probability by integrating the probability distributions, for instance, up to a distance of $1.1R_{WBC}$ away from the walls, where R_{WBC} is the WBC radius. Figure 9 presents a WBC margination diagram for a wide range of flow rates and hematocrits. It shows that efficient WBC margination occurs only within intermediate ranges of flow rates and H_t values. These results are consistent with experimental observations, which report WBC adhesion mainly in venular (not arteriolar) part of microcirculation, since the characteristic values of $\dot{\gamma}^*$ in venules of a comparable diameter are in the range $\dot{\gamma}^* = 1-25$, while in arterioles $\dot{\gamma}^* \gtrsim 30$.^{61,123,129} The simulation results also agree with *in vitro* experiments on WBC margination,⁸³ which identified optimal WBC margination in the range $H_t = 0.2-0.3$. The discrepancies with previous simulations⁶⁷ and experiments,¹ which found WBC margination and adhesion to be independent of H_t , can also be rationalized by noting that the studied flow rates and H_t values in Abbitt and Nash¹ and Freund⁶⁷ fell almost entirely into the region of strong WBC margination.

The effect of WBC deformability has also been explored in Fedosov *et al.*,⁶¹ where the region of strong WBC margination shrinks substantially as a WBC becomes more deformable. This is due to an increase of the lift force on a deformed WBC, since it may

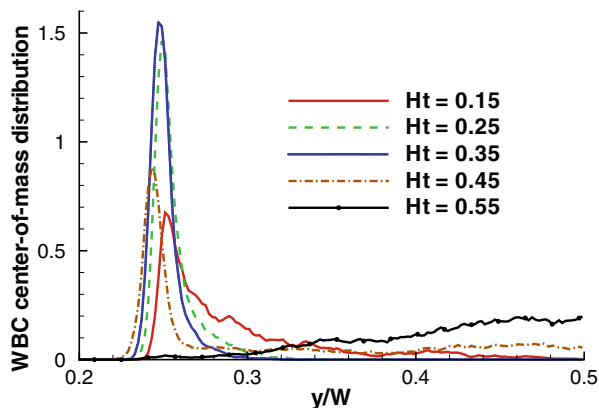


FIGURE 8. WBC center-of-mass distribution for various H_t values. The position y is normalized by the width of a channel W such that $y = 0$ corresponds to the wall position and $y/W = 0.25$ to the WBC radius. The figure is reproduced with permission from Fedosov *et al.*⁶¹

significantly depart from a spherical shape, which leads to a reduction in its margination. RBC aggregation has also been shown to enhance WBC margination.⁶¹ In particular, no significant differences in WBC margination between aggregating and non-aggregating RBC suspensions have been found for high flow rates similar to the effect of RBC aggregation on blood viscosity discussed in “Blood Rheology” section. However, WBC margination becomes more pronounced at high H_t values due to RBC aggregation. Here, RBC aggregation interactions lead to a less dispersed flow core, and therefore the shedding of RBCs into the region in front of a margined RBC is much reduced. Future studies of WBC margination will likely focus on 3D realistic models, and WBC margination and adhesion in complex microvascular networks.

Similar margination mechanisms are of importance in a number of diseases. For instance, margination of circulating tumor cells, which affects their adhesion to vascular endothelium, is expected to resemble that of WBCs due to the similarities in cell shapes and sizes. The WBC margination results are also relevant in spherocytosis disorder and in malaria, where spherically-shaped cells are expected to be mainly present near vessel walls resulting in an increased blood flow resistance and an enhanced cell adhesion when possible. Furthermore, the margination effect directly applies to segregation of various cells and particles in flow due to the differences in their deformability and shape. Recent numerical and theoretical investigations^{90,91} have shown that less deformable cells or capsules are preferably segregated toward channel

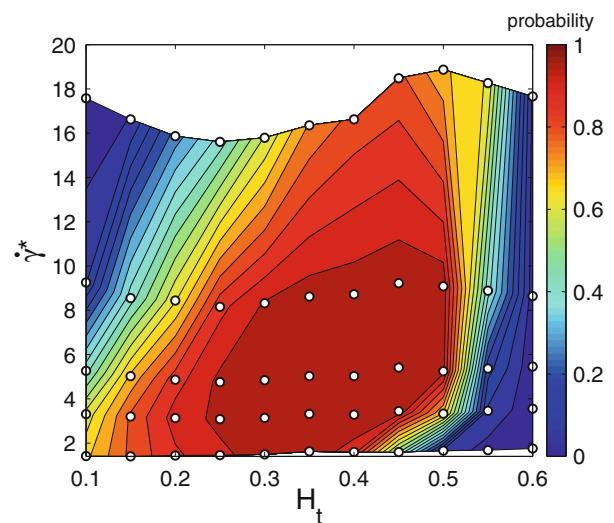


FIGURE 9. Probability diagram of WBC margination for various flow rates characterized by a non-dimensional shear rate $\dot{\gamma}^*$ and H_t values. The WBC is assumed to be rigid. The “○” symbols correspond to the simulations performed. The figure is reproduced with permission from Fedosov *et al.*⁶¹

walls. Such an effect is expected to play a role in malaria and sickle-cell anemia, where margination of stiff cells (e.g., Pf-RBCs) contributes to their adhesive potential. On the other hand, margination and segregation properties of different cells in blood flow can be exploited in diagnostics and treatment which might require rare cell detection and separation.^{15,78,80} Finally, solutes smaller than WBCs (e.g., platelets, large globular proteins such as von Willebrand factor) are also subject to margination in blood flow, which is relevant for margination (and therefore adhesion) of micro- and nano-carriers used for drug delivery. Next, the margination effect for platelets is discussed.

Margination of Platelets

Preferential migration of platelets towards the vessel walls in blood flow is critical for haemostasis and thrombosis, since margined platelets can better respond to injuries at the vessel wall. Margination of platelets as well as of WBCs is strongly affected by local hematocrit, flow rate, vessel geometry, and RBC aggregation properties. These characteristics might be significantly altered in different diseases in comparison with a healthy state leading to irreversible changes in cell margination properties which might affect their proper function. An increased concentration of platelets near the walls has been confirmed in *in vitro*^{45,151,157} and *in vivo*^{149,162} experiments. Experiments in glass channels with a suspension of RBCs and latex beads mimicking platelets^{45,151} for different H_t values have shown strong bead margination at high $H_t \gtrsim 0.3$ values. The experiments for various flow rates^{45,151} demonstrated a non-trivial bead margination dependence. At low shear rates platelet margination was weak and it increased with increasing flow rates, while the margination decreased again at very high shear rates; this behavior is qualitatively similar to that of WBCs. *In vivo* experiments¹⁶² have found that platelet margination is different in arterioles and venules confirming the effect of shear rate on margination. In view of these observations, it is plausible to expect that the mechanism of platelet margination is similar to that for WBCs described above, however its detailed understanding is still an open question.

There exist a number of numerical studies of platelet margination and its mechanisms.^{7,32,33,133,152,153,166,167} The 2D simulations of blood flow using ellipsoid-like RBCs and circular platelets⁷ have shown an increased platelet margination with increasing H_t as well as with an increase of shear rate in agreement with the experimental observations. The other set of 2D simulations^{32,33} has led to similar conclusions for the effects of H_t and shear rates on platelet margination. The local drift and diffusion of platelets have also been measured^{32,33} in an attempt to describe the platelet

margination process using the continuum drift-diffusion equation. The drift-diffusion equation results in a good qualitative description of platelet margination, where the drift can be hypothesized to arise from wall-platelet hydrodynamic interactions (i.e., lift force), while the shear-induced diffusivity of platelets is due to their collisions (or interactions) with RBCs in blood flow. Recent 3D simulations on platelet margination^{166,167} have found the margination process to be diffusional, which fits well into the drift-diffusion mechanism. Another 3D simulation study¹³³ have confirmed the effect of H_t on platelet margination, and, in addition, reported that spherical platelets marginate better than those having an ellipsoidal shape. Although the drift-diffusion mechanism for platelet margination seems to provide plausible explanation, it is still not clear whether it will lead to a universal description of the margination process. For instance, a recent theoretical model¹⁵² for platelet adhesion in blood flow suggests a rebounding collision mechanism for platelets due to their interactions with the flow core consisting primarily of RBCs.

DISEASED BLOOD FLOW

Rheology in Malaria

Red blood cells parasitized by the malaria-inducing *Plasmodium falciparum* (Pf) parasites, referred to here as Pf-RBCs, are subject to changes in their mechanical and rheological properties as well as in their morphology^{30,139,147} during intra-erythrocytic parasite development, which includes three intra-erythrocytic stages that span the 48-h asexual cycle: from ring \rightarrow trophozoite \rightarrow schizont stages. Gradual progression through these stages leads to considerable stiffening of Pf-RBCs as found in optical tweezers stretching experiments^{35,109,147} and in diffraction phase microscopy by monitoring the membrane fluctuations.^{37,118} Pf development also results in vacuoles formed inside of RBCs possibly changing the cell volume. Thus, Pf-RBCs at the final stage (schizont) often show a “near spherical” shape, while in the preceding stages maintain their biconcavity. These changes greatly affect the rheological properties and the dynamics of Pf-RBCs, and may lead to obstruction of small capillaries¹³⁹ impairing the ability of RBCs to circulate.

In this section, we present results of the application of the computational framework we discussed for healthy RBCs to Pf-RBCs. In particular, we first consider single RBCs for validation purposes and subsequently we present simulations for whole infected blood as suspension of a mixture of healthy and Pf-RBCs in order to investigate its rheological behavior.

In Bow *et al.*¹⁵ a new microfluidic device with periodic obstacles to red blood cell flow was employed to perform experiments for the late ring-stage *P. falciparum*-infected RBCs that are infected with a gene encoding green fluorescent protein (GFP). This device consisted of triangular obstacles (in converging and diverging form). For both the converging and diverging geometries infected RBCs exhibit lower average velocities than healthy RBCs (see Fig. 10a). In the DPD simulations, the infected cells are modeled with increased shear modulus and membrane viscosity values obtained from optical tweezers experiments. The parasite was modeled as a rigid sphere of two microns in diameter⁴⁸ placed inside the cell. Time lapse images from the simulations showing passage of an infected RBC through the periodic obstacles with converging and diverging opening geometries are shown in Fig. 10b.

The DPD model is able to capture the effect of changes of RBC properties arising from parasitization on the movement of healthy RBCs and Pf-RBCs quite accurately. A quantitative comparison of the simulation results with experimental data for the average velocity of uninfected RBCs and Pf-RBCs as a function of applied pressure gradient is shown in Fig. 11.

In order for the DPD simulation to provide insights into the design of microfluidic devices that are potentially capable of diagnosing disease states, it is essential to develop computational capabilities for the biorheology of whole blood (containing multiple components) where only a small volume fraction of the total cell population contains diseased cells. Next we present simulation results of blood flow in malaria as a suspension of healthy and Pf-RBCs at the trophozoite stage and hematocrit $H_t = 0.45$. Several realistic (low parasitemia levels) and hypothetical parasitemial levels (percentage of Pf-RBCs with respect to the total number of cells in a unit volume) from 5 to 100% are considered

in vessels with diameters 10 and 20 μm . The inset of Fig. 12a shows a snapshot of RBCs flowing in a tube of diameter 20 μm at a parasitemia level of 25%.

The main result in Fig. 12a is given by the plot of the relative apparent viscosity in malaria obtained at different parasitemia levels. The effect of parasitemia level appears to be more prominent for small diameters and high H_t values. Thus, at $H_t = 0.45$ blood flow resistance in malaria may increase up to 50% in vessels of diameters around 10 μm and up to 43% for vessel diameters around 20 μm . These increases do not include any contributions from the interaction of Pf-RBCs with the glycocalyx^{123,160}; such important interactions are complex as they may include cytoadhesion.

In Fig. 12b we also present the bulk viscosity of infected blood (schizont stage) simulated in a Couette type device at shear rate $\dot{\gamma} = 230 \text{ s}^{-1}$. The DPD simulations compare favorably with the experimental data obtained with a corresponding rheometer in Raventos-Suarez *et al.*¹³² These validated predictions were obtained without an explicit adhesion model between Pf-RBCs. It seems that such cell-cell interactions are not important at this high shear rate value.

With regards to the *cytoadherence* of Pf-RBCs, microfluidic experiments have been conducted in Antia *et al.*⁸ to investigate the enhanced cytoadherence of Pf-RBCs in flow chambers. These experiments revealed that the adhesive dynamics of Pf-RBCs can be very different than the well-established adhesive dynamics of leukocytes. For example, the adhesive dynamics of Pf-RBCs on purified ICAM-1 is characterized by stable and persistent flipping (rolling) behavior for a wide range of wall shear stresses (WSS)⁸ but also by intermittent pause and sudden flipping due to the parasite mass inertia. This interesting adhesive dynamics was simulated in Fedosov *et al.*⁶⁰ where a systematic study was conducted to estimate the magnitude of the

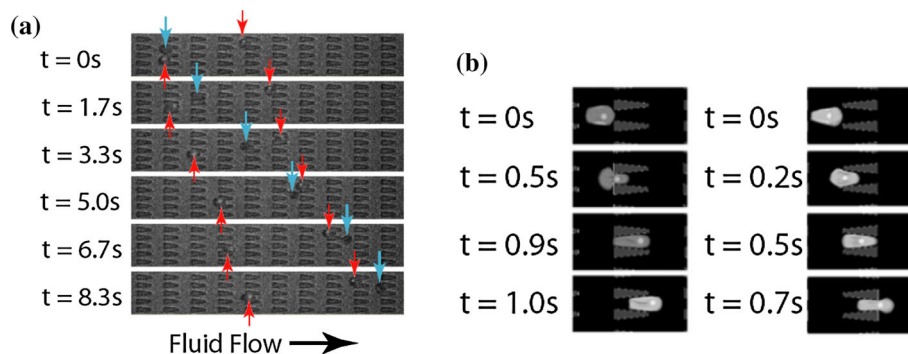


FIGURE 10. (a) Experimental images of ring-stage *P. falciparum*-infected (red arrows) and uninfected (blue arrows) RBCs in the channels at a pressure gradient of $0.24 \text{ Pa}/\mu\text{m}$. The small fluorescent dot inside the infected cell is the GFP-transfected parasite. At 8.3 s, it is clear that the uninfected cell moved about twice as far as each infected cell. (b) DPD simulation images of *P. falciparum*-infected RBCs traveling in channels of converging (left) and diverging (right) opening geometry at $0.48 \text{ Pa}/\mu\text{m}$. The figure is reproduced with permission from Bow *et al.*¹⁵

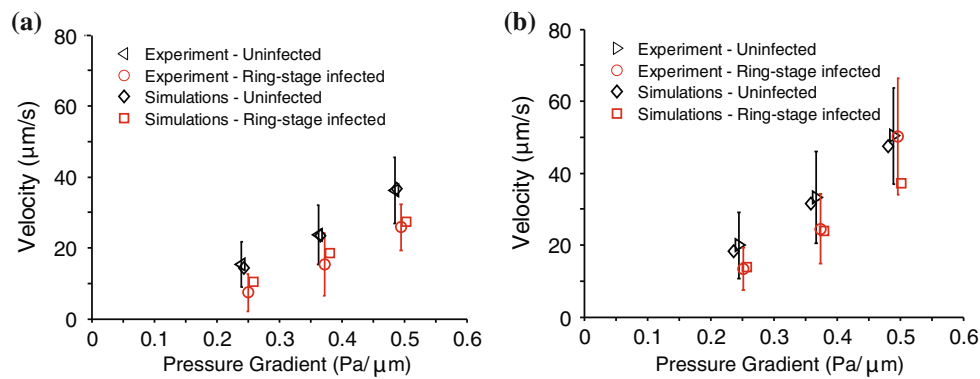


FIGURE 11. Average velocity of uninfected and ring-stage malaria infected RBCs as a function of pressure gradient and comparison of simulation and experimental results. Results are for diverging (a) and converging (b) geometries. The figure is reproduced with permission from Bow *et al.*¹⁵

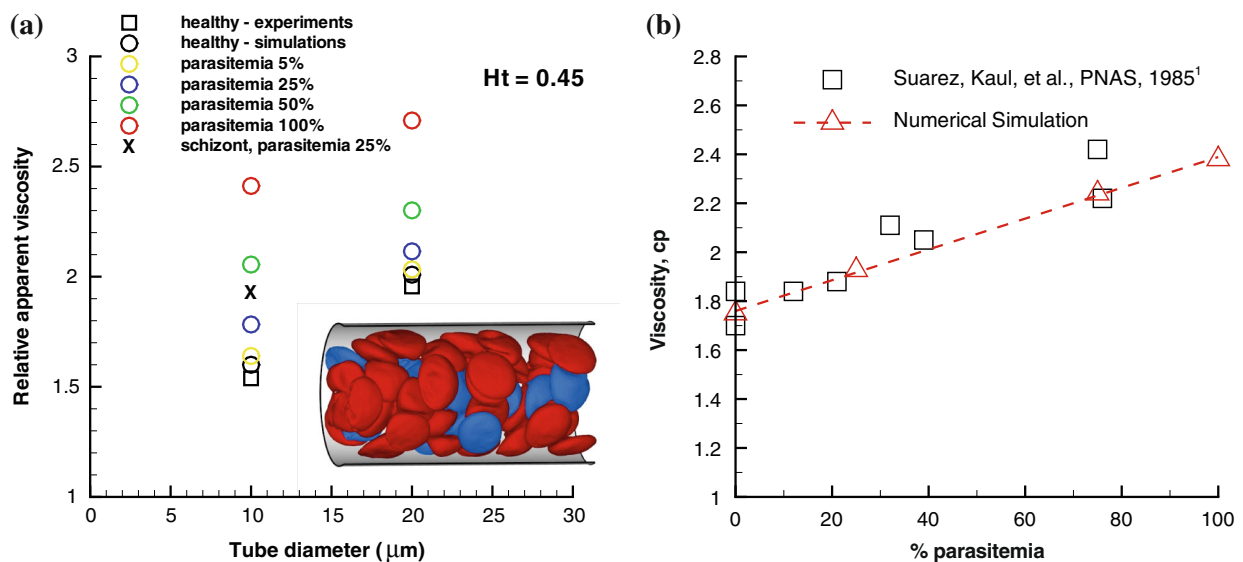


FIGURE 12. Flow resistance in malaria: (a) Healthy (red) and Pf-RBCs (blue) in Poiseuille flow in a tube of diameter $D = 20 \mu\text{m}$. $H_t = 0.45$, parasitemia level 25%. Plotted is the relative apparent viscosity of blood in malaria for various parasitemia levels and tube diameters. Symbol “x” corresponds to the schizont stage with a near-spherical shape. Experimental data from the empirical fit by Pries *et al.*¹²⁸ The figure is reproduced with permission from Fedosov *et al.*⁶⁰ (b) Bulk viscosity vs. parasitemia level for 30% hematocrit using a Couette device setup at shear rate 230 s^{-1} . The square symbols are measurements from Raventos-Suarez *et al.*¹³² and the triangles are simulations of Huan Lei (Brown University).

adhesion force. It was found to be in agreement with the adhesion force measured in related experiments by Cravalho *et al.*³¹ using an atomic force microscope (AFM). A Pf-RBC may exhibit firm adhesion at a WSS lower than a certain threshold and can completely detach from the wall at higher WSS. At low WSS, adhesion forces are strong enough to counteract the stress exerted on the cell by the flow resulting in its firm sticking to the wall. On the contrary, at high WSS existing bonds do not provide sufficiently strong adhesive interactions which yields RBC detachment from the wall. RBC visualizations showed that its

detachment at high WSS occurs during the relatively fast motion of RBC flipping, since the contact area at that step corresponds to its minimum.⁵⁸ However, in experiments⁸ Pf-RBCs which moved on a surface coated with the purified ICAM-1 showed persistent and stable rolling over long observation times and for a wide range of WSS values. This suggests that there must be a mechanism which stabilizes rolling of infected RBCs at high WSS. This fact is not surprising since, for example, leukocyte adhesion can be actively regulated depending on flow conditions and biochemical constituents present.^{64,143}

Rheology in Sickle Cell Anemia

The abnormal rheological properties of sickle cell RBCs (SS-RBCs) are correlated with the changes in their shapes and with the stiffened cell membrane. This was measured by micropipette experiments in Itoh *et al.*⁸² at different deoxygenated stages. The shear modulus of the full deoxygenated sickle cell falls within a wide range of values depending on the intracellular sickle hemoglobin HbS polymerization and it is more than 100 times the value of healthy cells. In the simulation studies in Lei and Karniadakis,⁹⁴ the shear modulus of the full deoxygenated sickle cell was set at very high value, e.g., 2000 times the value of the healthy cells to ensure a fully rigid SS-RBC. The bending rigidity of sickle cells under different deoxygenations was also set to be 200 times the value of the healthy RBC as no detailed values are available in the literature. In Lei and Karniadakis⁹⁴ sickle blood was modeled by a suspension of SS-RBCs in a solvent, which is represented by a collection of coarse-grained particles with DPD interactions. Different sickle cell morphologies were obtained based on a simulated annealing procedure and medical image analysis of clinical data.⁹⁴

To investigate the relationship between the effect of the rate of deoxygenation and the rheology of sickle blood, Kaul *et al.*⁸⁷ examined the shear viscosity of sickle blood subjected to both fast and gradual deoxygenation procedures. Sickle blood subjected to gradual deoxygenation procedure showed monotonic elevation of shear viscosity and the formation of the sickle shape of blood cells over a period of 30 minutes until the full deoxygenated state was achieved. On the contrary, sickle blood subjected to the fast deoxygenation procedure exhibits two distinct phases. The shear viscosity of the sickle blood showed fast elevation within the first 7 minutes of deoxygenation accompanied with the cell morphology transition to granular shape. However, the shear viscosity decreased gradually during further deoxygenation. A large portion of cells appears extremely elongated with the intracellular HbS fibers aligned in one direction. To study the morphology effect on the rheological behavior of the sickle blood, in Lei and Karniadakis⁹⁴ simulation results were presented for shear flow of the sickle blood with the three distinct types of sickle cell reported in the experiment (Hct = 40%). Figure 13 plots the shear viscosity of the deoxygenated sickle blood; the shear modulus of the cell membrane is the same for all the three types. The sickle blood shows elevated and shear-independent viscosity values for all three types. Moreover, the sickle blood with granular and sickle morphology shows larger viscosity compared with the elongated shape, which explains the progressive

decrease of the viscosity value with further deoxygenation, since a large portion of granular cells transforms into the elongated shape during the procedure. This result is probably due to the different effective volume for each type of the sickle blood in the shear flow system,⁸⁷ which affects the momentum transport ability between the cells.

The hemodynamics of sickle blood was studied in an isolated vasculature in Kaul *et al.*⁸⁶ While the oxygenated sickle blood exhibits hemodynamics similar to healthy blood, the deoxygenated sickle blood shows distinctive dynamic properties for different RBC types. In the simulation, sickle blood in a tube flow system with Hct = 30% was considered similar to the experiment although precise morphology details are difficult to extract from the experiments. The deoxygenated sickle blood flow was represented by a suspension of RBCs with sickle and granular shapes. Blood plasma and cytosol are explicitly represented by DPD, and they are separated by the cell membrane through the bounce-back reflection on membrane surface. The viscosity of the cytosol is set to $4\eta_0$ and $50\eta_0$ for the healthy and deoxygenated blood flow, where η_0 is the viscosity of the blood plasma. Figure 14 plots the increase of the flow resistance with different oxygen tension for the sickle and granular shapes. While both types of blood flow show further increase in flow resistance at deoxygenated state, the granular type of blood flow shows a more pronounced elevation compared with the sickle shape. One possible explanation proposed by the Kaul *et al.*⁸⁶ is the different distribution of SS-RBCs in the capillary. The inset plot of Fig. 14 shows the snapshots of the

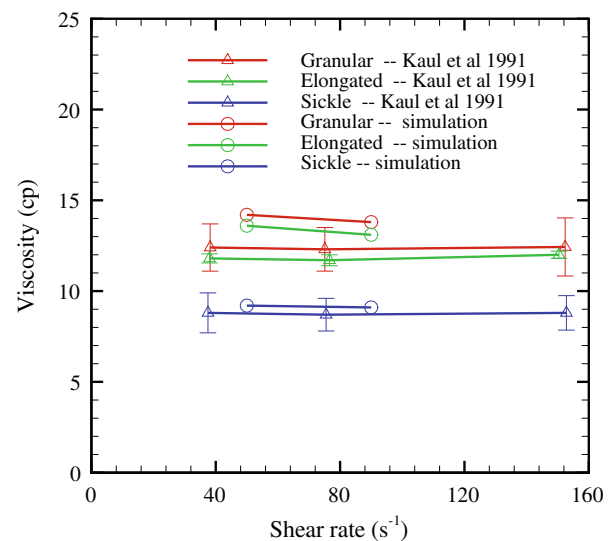


FIGURE 13. Shear viscosity of the sickle blood flow with different cell morphologies reported in Kaul *et al.*,⁸⁷ Hct = 40%; the simulation data are from Lei and Karniadakis.⁹⁴

sickle and granular cells in the tube flow. The cells of sickle shape tend to flow along the axis of the tube as observed in experimental studies in LaCelle⁹²; specific distributions of SS-RBC orientation were presented in Lei and Karniadakis.⁹⁴

In this section we presented DPD simulations of sickle blood flow and compared them with existing experimental results primarily on flow resistance. New microfluidic experiments, like the ones presented in the previous section on malaria, will be very useful in further validation of the DPD models, especially as a function of deoxygenation rate. Such experiments on a microfluidic cytometer are currently under way by the MIT co-author of this paper. In addition, quantifying—both experimentally and through DPD simulations—the SS-RBC membrane fluctuations will characterize better the precise state of the SS-RBCs. In a recent study in Byun *et al.*,¹⁸ it was found that the membrane fluctuations are significantly reduced for SS-RBCs taken from a sickle cell disease patient at ambient oxygen concentration. Careful analysis identified that high cytoplasmic viscosity is primarily responsible for the decreased membrane fluctuations, while irreversibly sickled cells were found to have higher membrane stiffness than that from other types of RBCs in sickle cell disease. Similarly, new microfluidic experiments are needed, in addition to the published results,⁷⁷ to elucidate the mechanism of cytoadhesion and occlusion in sickle cell blood flow, and to validate the recent findings of Lei and Karniadakis⁹⁵ on the precise mechanisms of vaso-occlusion in post-capillaries.

DISCUSSION

We have presented a new computational framework for simulating hematologic disorders based on DPD,

derived from the molecular dynamics method. This is a Lagrangian mesoscopic approach that can model seamlessly blood cells, proteins, plasma, and arterial walls, and can predict accurately blood flow in health and disease. To make this approach patient-specific we rely on single-RBC experiments, e.g., using optical tweezers, atomic force microscopy, *etc.*, and novel microfluidic devices in order to obtain data from which we can extract the macroscopic parameters of the model, which, in turn, can be related to the microscopic parameters required in DPD modeling. Moreover, these single-RBC data sets can serve as a validation testbed over a wide range of operating conditions. The utility of the DPD models is then to predict *whole blood* behavior in health or disease without any further “tuning” of the models’ parameters. We demonstrated that this is indeed the case for healthy and malaria-infected as well as sickle whole blood. We can also employ the DPD models for sensitivity studies, hence interacting more meaningfully with the experiments, and suggest specific measurements or parameter variations or even probe certain biophysical interactions, e.g., the interaction of the lipid bilayer with the cytoskeleton in a RBC,¹²⁰ not accessible with experimental techniques alone.

The two diseases we studied have some common biophysical characteristics, however, their biorheology is distinctly different. Hence, combining computational-experimental studies, as we have been pursuing in our research groups, can help greatly in quantifying fundamental biophysical mechanisms and possibly identifying unique biomarkers for these diseases. Our computational framework is general and employs patient-specific model input, hence it can be also used for other hematologic diseases, such as diabetes, HIV, and even in cancer metastasis. In the flow resistance results we presented in the current paper, we modeled

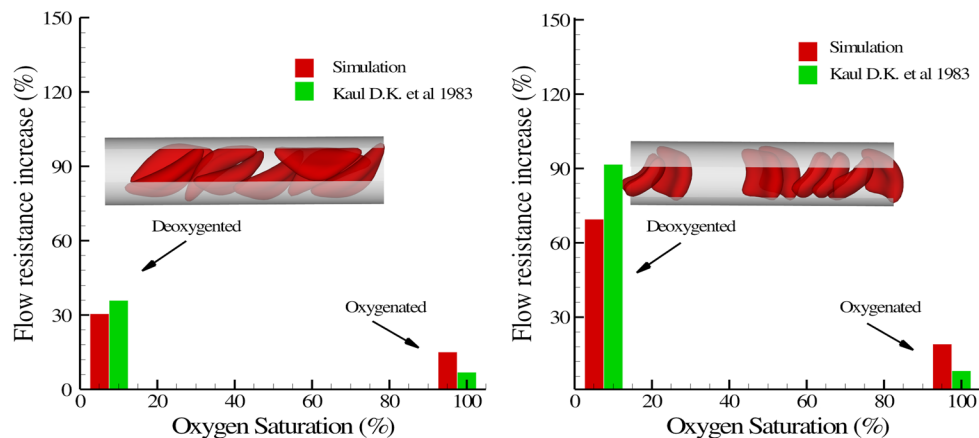


FIGURE 14. Increase of the flow resistance induced by the sickle blood flow for both sickle (left) and granular (right) shapes. The inset plot shows a snapshot of the sickle cells in the tube flow. The figure is reproduced with permission from Lei and Karniadakis.⁹⁴

whole blood as suspension of RBCs in plasma, hence ignoring the effect of white cells (about 0.7%) and platelets (less than 0.5%), also the effect of other proteins in the plasma, or the interaction with the endothelial surfaces of the blood vessel walls. From the numerical modeling standpoint, there is no particular difficulty in also modeling these other cells as we have done for margination studies in the subsection “[Margination of White Blood Cells and Platelets](#)”, or modeling the endothelium, which may contribute significantly in specific biomedical studies, e.g., in thrombosis, immune response. From the biorheological view point, however, as we demonstrated for both malaria and sickle cell anemia, the presence of the other cells is not important unlike the endothelium that can modify significantly the blood flow resistance.

ACKNOWLEDGMENTS

This work was supported by NIH and the new Collaboratory on Mathematics for Mesoscopic Modeling of Materials (CM4), sponsored by DOE. Simulations were performed at the DOE supercomputing centers *via* an INCITE DOE award, and at the Jülich supercomputing center. Dmitry A. Fedosov acknowledges funding by the Alexander von Humboldt Foundation. MD and SS acknowledge partial support from the Singapore-MIT Alliance for Research and Technology (SMART) Center.

REFERENCES

- ¹Abbitt, K. B., and G. B. Nash. Rheological properties of the blood influencing selectin-mediated adhesion of flowing leukocytes. *Am. J. Physiol.* 285:H229–H240, 2003.
- ²Abkarian, M., M. Faivre, and A. Viallat. Swinging of red blood cells under shear flow. *Phys. Rev. Lett.* 98:188302, 2007.
- ³Abkarian, M., M. Faivre, R. Horton, K. Smistrup, C. A. Best-Popescu, and H. A. Stone. Cellular-scale hydrodynamics. *Biomed. Mater.* 3:034011, 2008.
- ⁴Abkarian, M., C. Lartigue, and A. Viallat. Tank treading and unbinding of deformable vesicles in shear flow: determination of the lift force. *Phys. Rev. Lett.* 88:068103, 2002.
- ⁵Alizadehrad, D., Y. Imai, K. Nakaaki, T. Ishikawa, and T. Yamaguchi. Quantification of red blood cell deformation at high-hematocrit blood flow in microvessels. *J. Biomech.* 45:2684–2689, 2012.
- ⁶Allen, M. P., and D. J. Tildesley. *Computer Simulation of Liquids*. New York: Clarendon Press, 1987.
- ⁷AlMomani, T., H. S. Udaykumar, J. S. Marshall, and K. B. Chandran. Micro-scale dynamic simulation of erythrocyte–platelet interaction in blood flow. *Ann. Biomed. Eng.* 36:905–920, 2008.

- ⁸Antia, M., T. Herricks, and P. K. Rathod. Microfluidic modeling of cell–cell interactions in malaria pathogenesis. *PLoS Pathog.* 3:939–945, 2007.
- ⁹Bagchi, P. Mesoscale simulation of blood flow in small vessels. *Biophys. J.* 92:1858–1877, 2007.
- ¹⁰Bagchi, P., and R. M. Kalluri. Dynamic rheology of a dilute suspension of elastic capsules: effect of capsule tank-treading, swinging and tumbling. *J. Fluid Mech.* 669:498–526, 2011.
- ¹¹Bagchi, P., A. S. Popel, and P. C. Johnson. Computational fluid dynamic simulation of aggregation of deformable cells in a shear flow. *J. Biomech. Eng.* 127:1070–1080, 2005.
- ¹²Bagge, U., and R. Karlsson. Maintenance of white blood cell margination at the passage through small venular junctions. *Microvasc. Res.* 20:92–95, 1980.
- ¹³Bäumler, H., E. Donath, A. Krabi, W. Knippel, H. Budde, and A. Kiewewetter. Electrophoresis of human red blood cells and platelets: evidence for depletion of dextran. *Biorheology* 33:333–351, 1996.
- ¹⁴Beck, W. S. (ed.). *Hematology*, 5th ed. Cambridge: MIT Press, 1991.
- ¹⁵Bow, H., I. V. Pivkin, M. Diez-Silva, S. J. Goldfless, M. Dao, J. C. Niles, S. Suresh, and J. Han. A microfabricated deformability-based flow cytometer with application to malaria. *Lab Chip* 11:1065–1073, 2011.
- ¹⁶Brooks, D. E. The effect of neutral polymers on the electrokinetic potential of cells and other charged particles. *J. Colloid Interface Sci.* 43:700–713, 1973.
- ¹⁷Bugliarello, G., and J. Sevilla. Velocity distribution and other characteristics of steady and pulsatile blood flow in fine glass tubes. *Biorheology* 7:85–107, 1970.
- ¹⁸Byun, H. S., T. Hillman, J. Higgins, M. Diez-Silva, Z. Peng, M. Dao, R. Dasari, S. Suresh, and Y.-K. Park. Optical measurements of biomechanical properties of individual erythrocytes from a sickle patient. *Acta Biomater.* 8:4130–4138, 2012.
- ¹⁹Cantat, I., and C. Misbah. Lift force and dynamical unbinding of adhering vesicles under shear flow. *Phys. Rev. Lett.* 83:880–883, 1999.
- ²⁰Casson, N. *Rheology of Disperse Systems*. New York: Pergamon Press, 1992.
- ²¹Chaudhuri, O., S. Parekh, W. Lam, and D. Fletcher. Combined atomic force microscopy and side-view optical imaging for mechanical studies of cells. *Nat. Methods* 6:383–387, 2009.
- ²²Chien, S., and K.-M. Jan. Ultrastructural basis of the mechanism of rouleaux formation. *Microvasc. Res.* 5:155–166, 1973.
- ²³Chien, S., S. Usami, R. J. Dellenback, M. I. Gregersen, L. B. Nanninga, and N. M. Guest. Blood viscosity: influence of erythrocyte aggregation. *Science* 157:829–831, 1967.
- ²⁴Chien, S., S. Usami, R. J. Kellenback, and M. I. Gregersen. Shear-dependent interaction of plasma proteins with erythrocytes in blood rheology. *Am. J. Physiol.* 219:143–153, 1970.
- ²⁵Chien, S., S. Usami, H. M. Taylor, J. L. Lundberg, and M. I. Gregersen. Effects of hematocrit and plasma proteins on human blood rheology at low shear rates. *J. Appl. Physiol.* 21:81–87, 1996.
- ²⁶Clausen, J. R., D. A. Reasor, Jr., and C. K. Aidun. The rheology and microstructure of concentrated non-colloidal suspensions of deformable capsules. *J. Fluid Mech.* 685:202–234, 2011.
- ²⁷Cokelet, G., E. W. Merrill, E. R. Gilliland, H. Shin, A. Britten, and J. R. E. Wells. The rheology of human blood-

- measurement near and at zero shear rate. *Trans. Soc. Rheol.* 7:303–317, 1963.
- ²⁸Cokelet, G. R., and H. L. Goldsmith. Decreased hydrodynamic resistance in the two-phase flow of blood through small vertical tubes at low flow rates. *Circ. Res.* 68:1–17, 1991.
- ²⁹Copley, A. L., C. R. Huang, and R. G. King. Rheo-goniometric studies of whole human blood at shear rates from 1,000–0.0009 sec⁻¹. Part I. Experimental findings. *Biorheology* 10:17–22, 1973.
- ³⁰Cranston, H. A., C. W. Boylan, G. L. Carroll, S. P. Sutura, J. R. Williamson, I. Y. Gluzman, and D. J. Krogstad. Plasmodium falciparum maturation abolishes physiologic red cell deformability. *Science* 223:400–403, 1984.
- ³¹Cravalho, P., M. Diez-Silva, H. Chen, M. Dao, and S. Suresh. Cytoadherence of erythrocytes invaded by *Plasmodium falciparum*: quantitative contact-probing of a human malaria receptor. *Acta Biomater.* 9:6349–6359, 2013.
- ³²Crowl, L., and A. L. Fogelson. Computational model of whole blood exhibiting lateral platelet motion induced by red blood cells. *Int. J. Numer. Methods Biomed. Eng.* 26:471–487, 2010.
- ³³Crowl, L., and A. L. Fogelson. Analysis of mechanisms for platelet near-wall excess under arterial blood flow conditions. *J. Fluid Mech.* 676:348–375, 2011.
- ³⁴Dao, M., J. Li, and S. Suresh. Molecularly based analysis of deformation of spectrin network and human erythrocyte. *Mater. Sci. Eng. C* 26:1232–1244, 2006.
- ³⁵Dao, M., C. T. Lim, and S. Suresh. Mechanics of the human red blood cell deformed by optical tweezers. *J. Mech. Phys. Solids* 51:2259–2280, 2003.
- ³⁶Diez-Silva, M., M. Dao, J. Han, C.-T. Lim, and S. Suresh. Shape and biomechanical characteristics of human red blood cells in health and disease. *MRS Bull.* 35:382–388, 2010.
- ³⁷Diez-Silva, M., Y.-K. Park, S. Huang, H. Bow, O. Mercereau-Puijalon, G. Deplaine, C. Lavazec, S. Perrot, S. Bonnefoy, M. S. Feld, J. Han, M. Dao, and S. Suresh. Pf155/RESA protein influences the dynamic microcirculatory behavior of ring-stage *Plasmodium falciparum* infected red blood cells. *Sci. Rep.* 2:614, 2012.
- ³⁸Discher, D. E., D. H. Boal, and S. K. Boey. Simulations of the erythrocyte cytoskeleton at large deformation. II. Micropipette aspiration. *Biophys. J.* 75:1584–1597, 1998.
- ³⁹Discher, D. E., N. Mohandas, and E. A. Evans. Molecular maps of red cell deformation: hidden elasticity and in situ connectivity. *Science* 266:1032–1035, 1994.
- ⁴⁰Doddi, S. K., and P. Bagchi. Lateral migration of a capsule in a plane Poiseuille flow in a channel. *Int. J. Multi-phase Flow* 34:966–986, 2008.
- ⁴¹Doddi, S. K., and P. Bagchi. Three-dimensional computational modeling of multiple deformable cells flowing in microvessels. *Phys. Rev. E* 79:046318, 2009.
- ⁴²Dupin, M. M., I. Halliday, C. M. Care, L. Alboul, and L. L. Munn. Modeling the flow of dense suspensions of deformable particles in three dimensions. *Phys. Rev. E* 75:066707, 2007.
- ⁴³Dupin, M. M., I. Halliday, C. M. Care, and L. L. Munn. Lattice boltzmann modeling of blood cell dynamics. *Int. J. Comput. Fluid Dyn.* 22:481–492, 2008.
- ⁴⁴Dzwiniel, W., K. Boryczko, and D. A. Yuen. A discrete-particle model of blood dynamics in capillary vessels. *J. Colloid Interface Sci.* 258:163–173, 2003.
- ⁴⁵Eckstein, E. C., A. W., and F. J. Millero III. Conditions for the occurrence of large near-wall excesses of small particles during blood flow. *Microvasc. Res.* 36:31–39, 1988.
- ⁴⁶Eggleton, C. D., and A. S. Popel. Large deformation of red blood cell ghosts in a simple shear flow. *Phys. Fluids* 10:1834, 1998.
- ⁴⁷Enden, G., and A. S. Popel. A numerical study of plasma skimming in small vascular bifurcations. *J. Biomech. Eng.* 116:79–88, 1994.
- ⁴⁸Enderle, T., T. Ha, D. F. Ogletree, D. S. Chemla, C. Magowan, S. Weiss. Membrane specific mapping and colocalization of malarial and host skeletal proteins in the *Plasmodium falciparum* infected erythrocyte by dual-color near-field scanning optical microscopy. *Proc. Natl Acad. Sci. U.S.A.* 94:520–525, 1997.
- ⁴⁹Ermak, D. L., and J. A. McCammon. Brownian dynamics with hydrodynamic interactions. *J. Chem. Phys.* 69:1352–1360, 1978.
- ⁵⁰Espanol, P., and M. Revenga. Smoothed dissipative particle dynamics. *Phys. Rev. E* 67:026705, 2003.
- ⁵¹Espanol, P., and P. Warren. Statistical mechanics of dissipative particle dynamics. *Europhys. Lett.* 30:191–196, 1995.
- ⁵²Evans, E. A., and R. Skalak. *Mechanics and Thermodynamics of Biomembranes*. Boca Raton, FL: CRC Press, 1980.
- ⁵³Fahraeus, R. The suspension stability of blood. *Physiol. Rev.* 9:241–274, 1929.
- ⁵⁴Fahraeus, R. The influence of the rouleau formation of the erythrocytes on the rheology of the blood. *Acta Med. Scand.* 161:151–165, 1958.
- ⁵⁵Fahraeus, R., and T. Lindqvist. Viscosity of blood in narrow capillary tubes. *Am. J. Phys.* 96:562–568, 1931.
- ⁵⁶Fedosov, D. A., B. Caswell, and G. E. Karniadakis. A multiscale red blood cell model with accurate mechanics, rheology, and dynamics. *Biophys. J.* 98:2215–2225, 2010.
- ⁵⁷Fedosov, D. A., B. Caswell, and G. E. Karniadakis. Systematic coarse-graining of spectrin-level red blood cell models. *Comput. Methods Appl. Mech. Eng.* 199:1937–1948, 2010.
- ⁵⁸Fedosov, D. A., B. Caswell, and G. E. Karniadakis. Wall shear stress-based model for adhesive dynamics of red blood cells in malaria. *Biophys. J.* 100:2084–2093, 2011.
- ⁵⁹Fedosov, D. A., B. Caswell, A. S. Popel, and G. E. Karniadakis. Blood flow and cell-free layer in microvessels. *Microcirculation* 17:615–628, 2010.
- ⁶⁰Fedosov, D. A., B. Caswell, S. Suresh, and G. E. Karniadakis. Quantifying the biophysical characteristics of *Plasmodium falciparum*-parasitized red blood cells in microcirculation. *Proc. Natl Acad. Sci. U.S.A.* 108:35–39, 2011.
- ⁶¹Fedosov, D. A., J. Fornleitner, and G. Gompper. Margination of white blood cells in microcapillary flow. *Phys. Rev. Lett.* 108:028104, 2012.
- ⁶²Fedosov, D. A., H. Noguchi, and G. Gompper. Multi-scale modeling of blood flow: from single cells to blood rheology. *Biomech. Model. Mechanobiol.*, 2013. DOI:10.1007/s10237-013-0497-9.
- ⁶³Fedosov, D. A., W. Pan, B. Caswell, G. Gompper, and G. E. Karniadakis. Predicting human blood viscosity in silico. *Proc. Natl Acad. Sci. U.S.A.* 108:11772–11777, 2011.
- ⁶⁴Finger, E. B., K. D. Puri, R. Alon, M. B. Lawrence, U. H. von Andrian, and T. A. Springer. Adhesion through

- L-selectin requires a threshold hydrodynamic shear. *Nature (London)* 379:266–269, 1996.
- ⁶⁵Firrell, J. C., and H. H. Lipowsky. Leukocyte margination and deformation in mesenteric venules of rat. *Am. J. Physiol.* 256:H1667–H1674, 1989.
- ⁶⁶Fischer, T. M. Shape memory of human red blood cells. *Biophys. J.* 86:3304–3313, 2004.
- ⁶⁷Freund, J. B. Leukocyte margination in a model microvessel. *Phys. Fluids* 19:023301, 2007.
- ⁶⁸Freund, J. B., and M. M. Orescanin. Cellular flow in a small blood vessel. *J. Fluid Mech.* 671:466–490, 2011.
- ⁶⁹Fung, Y. C. *Biomechanics: Mechanical Properties of Living Tissues*, 2nd ed. New York: Springer, 1993.
- ⁷⁰Gaetgens, P., C. Dührssen, and K. H. Albrecht. Motion, deformation, and interaction of blood cells and plasma during flow through narrow capillary tubes. *Blood Cells* 6:799–817, 1980.
- ⁷¹Gidaspow, D., and J. Huang. Kinetic theory based model for blood flow and its viscosity. *Ann. Biomed. Eng.* 38:1534–1545, 2009.
- ⁷²Goldsmith, H. L., G. R. Cokelet, and P. Gaetgens. Robin Fahraeus: evolution of his concepts in cardiovascular physiology. *Am. J. Physiol.* 257:H1005–H1015, 1989.
- ⁷³Goldsmith, H. L., and S. Spain. Margination of leukocytes in blood flow through small tubes. *Microvasc. Res.* 27:204–222, 1984.
- ⁷⁴Gompper, G., T. Ihle, D. M. Kroll, and R. G. Winkler. Multi-particle collision dynamics: a particle-based meso-scale simulation approach to the hydrodynamics of complex fluids. *Adv. Polym. Sci.* 221:1–87, 2009.
- ⁷⁵Groot, R. D., and P. B. Warren. Dissipative particle dynamics: bridging the gap between atomistic and mesoscopic simulation. *J. Chem. Phys.* 107:4423–4435, 1997.
- ⁷⁶Henon, S., G. Lenormand, A. Richert, and F. Gallet. A new determination of the shear modulus of the human erythrocyte membrane using optical tweezers. *Biophys. J.* 76:1145–1151, 1999.
- ⁷⁷Higgins, J. M., D. T. Eddington, S. N. Bhatia, and L. Mahadevan. Sick cell vasoocclusion and rescue in a microfluidic device. *Proc. Natl Acad. Sci. U.S.A.* 104:20496–20500, 2007.
- ⁷⁸Holm, S. H., J. P. Beech, M. P. Barrett, and J. O. Tegenfeldt. Separation of parasites from human blood using deterministic lateral displacement. *Lab Chip* 11:1326–1332, 2011.
- ⁷⁹Hoogerbrugge, P. J., and J. M. V. A. Koelman. Simulating microscopic hydrodynamic phenomena with dissipative particle dynamics. *Europhys. Lett.* 19:155–160, 1992.
- ⁸⁰Hou, H. W., A. A. S. Bhagat, A. G. L. Chong, P. Mao, K. S. W. Tan, J. Han, C. T. Lim. Deformability based cell margination—a simple microfluidic design for malaria-infected erythrocyte separation. *Lab Chip* 10:2605–2613, 2010.
- ⁸¹Iordan A, Duperray A, Verdier C (2008) Fractal approach to the rheology of concentrated suspensions. *Phys. Rev. E* 77:011911.
- ⁸²Itoh, T., S. Chien, and S. Usami. Effects of hemoglobin concentration on deformability of individual sickle cells after deoxygenation. *Blood* 85:2245–2253, 1995.
- ⁸³Jain, A., and L. L. Munn. Determinants of leukocyte margination in rectangular microchannels. *PLoS ONE* 4:e7104, 2009.
- ⁸⁴Janoschek, F., F. Toschii, and J. Harting. Simplified particulate model for coarse-grained hemodynamics simulations. *Phys. Rev. E* 82:056710, 2010.
- ⁸⁵Ju, M., S. S. Ye, B. Namgung, S. Cho, H. T. Low, H. L. Leo, and S. Kim. A review of numerical methods for red blood cell flow simulation. *Computer Methods Biomech. Biomed. Eng.*, 2013. DOI:10.1080/10255842.2013.783574.
- ⁸⁶Kaul, D. K., M. E. Fabry, P. Windisch, S. Baez, and R. L. Nagel. Erythrocytes in sickle-cell-anemia are heterogeneous in their rheological and hemodynamic characteristics. *J. Clin. Invest.* 72:22–31, 1983.
- ⁸⁷Kaul, D. K., and H. Xue. Rate of deoxygenation and rheologic behavior of blood in sickle cell anemia. *Blood* 77:1353–1361, 1991.
- ⁸⁸Kim, S., L. R. Long, A. S. Popel, M. Intaglietta, and P. C. Johnson. Temporal and spatial variations of cell-free layer width in arterioles. *Am. J. Physiol.* 293:H1526–H1535, 2007.
- ⁸⁹Kim, S., P. K. Ong, O. Yalcin, M. Intaglietta, and P. C. Johnson. The cell-free layer in microvascular blood flow. *Biorheology* 46:181–189, 2009.
- ⁹⁰Kumar, A., and M. D. Graham. Margination and segregation in confined flows of blood and other multicomponent suspensions. *Soft Matter* 8:10536–10548, 2012.
- ⁹¹Kumar, A., and M. D. Graham. Mechanism of margination in confined flows of blood and other multicomponent suspensions. *Phys. Rev. Lett.* 109:108102, 2012.
- ⁹²LaCelle, P. L. Oxygen delivery to muscle cells during capillary vascular occlusion by sickle erythrocytes. *Blood Cells* 3:263–272, 1977.
- ⁹³Lei, H., D. A. Fedosov, B. Caswell, and G. E. Karniadakis. Blood flow in small tubes: quantifying the transition to the non-continuum regime. *J. Fluid Mech.* 722:214–239, 2013.
- ⁹⁴Lei, H., and G. E. Karniadakis. Quantifying the rheological and hemodynamic characteristics of sickle cell anemia. *Biophys. J.* 102:185–194, 2012.
- ⁹⁵Lei, H., and G. E. Karniadakis. Probing vaso-occlusion phenomena in sickle cell anemia via mesoscopic simulations. *Proc. Natl Acad. Sci. U.S.A.* 110:11326–11330, 2013.
- ⁹⁶Li J, Dao M, Lim CT, Suresh S (2005) Spectrin-level modeling of the cytoskeleton and optical tweezers stretching of the erythrocyte. *Biophys. J.* 88:3707–3719.
- ⁹⁷Li, X., P. M. Vlahovska, and G. E. Karniadakis. Continuum- and particle-based modeling of shapes and dynamics of red blood cells in health and disease. *Soft Matter* 9:28–37, 2013.
- ⁹⁸Liu, Y., and W. K. Liu. Rheology of red blood cell aggregation by computer simulation. *J. Comput. Phys.* 220:139–154, 2006.
- ⁹⁹Lucy, L. B. A numerical approach to testing the fission hypothesis. *Astronom. J.* 82:1013–1024, 1977.
- ¹⁰⁰MacMeccan, R. M., J. R. Clausen, G. P. Neitzel, and C. K. Aidun. Simulating deformable particle suspensions using a coupled lattice-Boltzmann and finite-element method. *J. Fluid Mech.* 618:13–39, 2009.
- ¹⁰¹Maeda, N., Y. Suzuki, J. Tanaka, and N. Tateishi. Erythrocyte flow and elasticity of microvessels evaluated by marginal cell-free layer and flow resistance. *Am. J. Physiol.* 271:H2454–H2461, 1996.
- ¹⁰²Malevanets, A., and R. Kapral. Mesoscopic model for solvent dynamics. *J. Chem. Phys.* 110:8605–8613, 1999.
- ¹⁰³Mattice, W. L., and U. W. Suter. *Conformational Theory of Large Molecules: The Rotational Isomeric State Model in Macromolecular Systems*. New York: Wiley Interscience, 1994.
- ¹⁰⁴McWhirter, J. L., H. Noguchi, and G. Gompper. Flow-induced clustering and alignment of vesicles and red blood

- cells in microcapillaries. *Proc. Natl Acad. Sci. U.S.A.* 106:6039–6043, 2009.
- ¹⁰⁵Melchionna, S. A model for red blood cells in simulations of large-scale blood flows. *Macromol. Theory Simul.* 20:548–561, 2011.
- ¹⁰⁶Merrill, E. W., E. R. Gilliland, G. Cokelet, H. Shin, A. Britten, J. R. E. Wells. Rheology of human blood near and at zero flow. *Biophys. J.* 3:199–213, 1963.
- ¹⁰⁷Merrill, E. W., E. R. Gilliland, T. S. Lee, and E. W. Salzman. Blood rheology: effect of fibrinogen deduced by addition. *Circ. Res.* 18:437–446, 1966.
- ¹⁰⁸Messlinger, S., B. Schmidt, H. Noguchi, and G. Gompper. Dynamical regimes and hydrodynamic lift of viscous vesicles under shear. *Phys. Rev. E* 80:011901, 2009.
- ¹⁰⁹Mills, J. P., M. Diez-Silva, D. J. Quinn, M. Dao, M. J. Lang, K. S. W. Tan, C. T. Lim, G. Milon, P. H. David, O. Mercereau-Puijalon, S. Bonnefoy, and S. Suresh. Effect of plasmidial RESA protein on deformability of human red blood cells harboring *Plasmodium falciparum*. *Proc. Natl Acad. Sci. U.S.A.* 104:9213–9217, 2007.
- ¹¹⁰Monaghan, J. J. Smoothed particle hydrodynamics. *Rep. Prog. Phys.* 68:1703–1759, 2005.
- ¹¹¹Murata, T. Effects of sedimentation of small red blood cell aggregates on blood flow in narrow horizontal tubes. *Biorheology* 33:267–283, 1996.
- ¹¹²Neu, B., and H. J. Meiselman. Depletion-mediated red blood cell aggregation in polymer solutions. *Biophys. J.* 83:2482–2490, 2002.
- ¹¹³Noguchi, H., and G. Gompper. Fluid vesicles with viscous membranes in shear flow. *Phys. Rev. Lett.* 93:258102, 2004.
- ¹¹⁴Noguchi, H., and G. Gompper. Dynamics of fluid vesicles in shear flow: effect of the membrane viscosity and thermal fluctuations. *Phys. Rev. E* 72:011901, 2005.
- ¹¹⁵Noguchi, H., and G. Gompper. Shape transitions of fluid vesicles and red blood cells in capillary flows. *Proc. Natl Acad. Sci. U.S.A.* 102:14159–14164, 2005.
- ¹¹⁶Pan, W., B. Caswell, and G. E. Karniadakis. A low-dimensional model for the red blood cell. *Soft Matter* 6:4366–4376, 2010.
- ¹¹⁷Pan, W., D. A. Fedosov, B. Caswell, and G. E. Karniadakis. Predicting dynamics and rheology of blood flow: a comparative study of multiscale and low-dimensional models of red blood cells. *Microvasc. Res.* 82:163–170, 2011.
- ¹¹⁸Park, Y. K., M. Diez-Silva, G. Popescu, G. Lykotraftitis, W. Choi, M. S. Feld, and S. Suresh. Refractive index maps and membrane dynamics of human red blood cells parasitized by *Plasmodium falciparum*. *Proc. Natl Acad. Sci. U.S.A.* 105:13730–13735, 2008.
- ¹¹⁹Pearson, M. J., and H. H. Lipowsky. Influence of erythrocyte aggregation on leukocyte margination in postcapillary venules of rat mesentery. *Am. J. Physiol.* 279:H1460–H1471, 2000.
- ¹²⁰Peng, Z., X. Li, I. Pivkin, M. Dao, G. E. Karniadakis, and S. Suresh. Lipid-bilayer and cytoskeletal interactions in a red blood cell. *Proc. Natl Acad. Sci. U.S.A.* 110:13356–13361, 2013.
- ¹²¹Picart, C., J. M. Piau, and H. Galliard. Human blood shear yield stress and its hematocrit dependence. *J. Rheol.* 42:1–12, 1998.
- ¹²²Pivkin, I. V., and G. E. Karniadakis. Accurate coarse-grained modeling of red blood cells. *Phys. Rev. Lett.* 101:118105, 2008.
- ¹²³Popel, A. S., and P. C. Johnson. Microcirculation and hemorrheology. *Annu. Rev. Fluid Mech.* 37:43–69, 2005.
- ¹²⁴Popescu, G., Y.-K. Park, R. R. Dasari, K. Badizadegan, and M. S. Feld. Coherence properties of red blood cell membrane motions. *Phys. Rev. E* 76:031902, 2007.
- ¹²⁵Pozrikidis, C. Numerical simulation of cell motion in tube flow. *Ann. Biomed. Eng.* 33:165–178, 2005.
- ¹²⁶Pribush, A., D. Zilberman-Kravits, and N. Meyerstein. The mechanism of the dextran-induced red blood cell aggregation. *Eur. Biophys. J.* 36:85–94, 2007.
- ¹²⁷Pries, A. R., K. Ley, M. Claassen, and P. Gaetgens. Red cell distribution at microvascular bifurcations. *Microvasc. Res.* 38:81–101, 1989.
- ¹²⁸Pries, A. R., D. Neuhaus, and P. Gaetgens. Blood viscosity in tube flow: dependence on diameter and hematocrit. *Am. J. Physiol.* 263:H1770–H1778, 1992.
- ¹²⁹Pries, A. R., T. W. Secomb, and P. Gaetgens. Structure and hemodynamics of microvascular networks: heterogeneity and correlations. *Am. J. Physiol.* 269:H1713–H1722, 1995.
- ¹³⁰Pries, A. R., T. W. Secomb, and P. Gaetgens. Biophysical aspects of blood flow in the microvasculature. *Cardiovasc. Res.* 32:654–667, 1996.
- ¹³¹Puig-de Morales-Marinkovic, M., K. T. Turner, J. P. Butler, J. J. Fredberg, and S. Suresh. Viscoelasticity of the human red blood cell. *Am. J. Physiol.* 293:C597–C605, 2007.
- ¹³²Raventos-Suarez, C., D. Kaul, and R. Nagel. Membrane knobs are required for the microcirculatory obstruction induced by *Plasmodium falciparum*-infected erythrocytes. *Proc. Natl Acad. Sci. U.S.A.* 82:3829–3833, 1985.
- ¹³³Reasor, Jr., D. A., M. Mehrabadi, D. N. Ku, and C. K. Aidun. Determination of critical parameters in platelet margination. *Ann. Biomed. Eng.* 41:238–249, 2013.
- ¹³⁴Reinke, W., P. Gaetgens, and P. C. Johnson. Blood viscosity in small tubes: effect of shear rate, aggregation, and sedimentation. *Am. J. Physiol.* 253:H540–H547, 1987.
- ¹³⁵Rosenbluth, M., W. Lam, and D. Fletcher. Analyzing cell mechanics in hematologic diseases with microfluidic biophysical flow cytometry. *Lab Chip* 8:1062–1070, 2008.
- ¹³⁶Samsel, R. W., and A. S. Perelson. Kinetics of rouleau formation: I. A mass action approach with geometric features. *Biophys. J.* 37:493–514, 1982.
- ¹³⁷Schmid-Schönbein, H., and R. E. Wells. Rheological properties of human erythrocytes and their influence upon the “anomalous” viscosity of blood. *Ergeb. Physiol. Biol. Chem. Exper. Pharmacol.* 63:146–219, 1971.
- ¹³⁸Sharan, M., and A. S. Popel. A two-phase model for flow of blood in narrow tubes with increased effective viscosity near the wall. *Biorheology* 38:415–428, 2001.
- ¹³⁹Shelby, J. P., J. White, K. Ganesan, P. K. Rathod, and D. T. Chiu. A microfluidic model for single-cell capillary obstruction by *Plasmodium falciparum*-infected erythrocytes. *Proc. Natl Acad. Sci. U.S.A.* 100:14618–14622, 2003.
- ¹⁴⁰Skalak, R., and P. I. Branemark. Deformation of red blood cells in capillaries. *Science* 164:717–719, 1969.
- ¹⁴¹Skalak, R., S. R. Keller, and T. W. Secomb. Mechanics of blood flow. *J. Biomech. Eng.* 103:102–115, 1981.
- ¹⁴²Skotheim, J. M., and T. W. Secomb. Red blood cells and other nonspherical capsules in shear flow: oscillatory dynamics and the tank-treading-to-tumbling transition. *Phys. Rev. Lett.* 98:078301, 2007.
- ¹⁴³Springer, T. A. Traffic signals on endothelium for lymphocyte recirculation and leukocyte emigration. *Annu. Rev. Physiol.* 57:827–872, 1995.
- ¹⁴⁴Steffen, P., C. Verdier, and C. Wagner. Quantification of depletion-induced adhesion of red blood cells. *Phys. Rev. Lett.* 110:018102, 2013.

- ¹⁴⁵Succi, S. The Lattice Boltzmann Equation for Fluid Dynamics and Beyond. Oxford: Oxford University Press, 2001.
- ¹⁴⁶Sun, C., C. Migliorini, and L. L. Munn. Red blood cells initiate leukocyte rolling in postcapillary expansions: a lattice Boltzmann analysis. *Biophys. J.* 85:208–222, 2003.
- ¹⁴⁷Suresh, S., J. Spatz, J. P. Mills, A. Micoulet, M. Dao, C. T. Lim, M. Beil, and T. Seufferlein. Connections between single-cell biomechanics and human disease states: gastrointestinal cancer and malaria. *Acta Biomater.* 1:15–30, 2005.
- ¹⁴⁸Suzuki, Y., N. Tateishi, M. Soutani, and N. Maeda. Deformation of erythrocytes in microvessels and glass capillaries: effect of erythrocyte deformability. *Microcirculation* 3:49–57, 1996.
- ¹⁴⁹Tangelder, G. J., H. C. Teirlinck, D. W. Slaaf, and R. S. Reneman. Distribution of blood platelets flowing in arterioles. *Am. J. Physiol.* 248:H318–H323, 1985.
- ¹⁵⁰Thurston, G. B. Viscoelastic properties of blood and blood analogs. In *Advances in Hemodynamics and Hemorheology*, Vol. 1, edited by T. V. How. Greenwich, CT: JAI Press, 1996, pp. 1–30.
- ¹⁵¹Tilles, A. W., and E. C. Eckstein. The near-wall excess of platelet-sized particles in blood flow: its dependence on hematocrit and wall shear rate. *Microvasc. Res.* 33:211–223, 1987.
- ¹⁵²Tokarev, A. A., A. A. Butylin, and F. I. Ataulakhanov. Platelet adhesion from shear blood flow is controlled by near-wall rebounding collisions with erythrocytes. *Biophys. J.* 100:799–808, 2011.
- ¹⁵³Tokarev, A. A., A. A. Butylin, E. A. Ermakova, E. E. Shnol, G. P. Panasenkov, and F. I. Ataulakhanov. Finite platelet size could be responsible for platelet margination effect. *Biophys. J.* 101:1835–1843, 2011.
- ¹⁵⁴Tomaiuolo, G., V. Preziosi, M. Simeone, S. Guido, R. Ciancia, V. Martinelli, C. Rinaldi, B. Rotoli. A methodology to study the deformability of red blood cells flowing in microcapillaries in vitro. *Ann Ist Super Sanita* 43:186–192, 2007.
- ¹⁵⁵Tomaiuolo, G., M. Simeone, V. Martinelli, B. Rotoli, and S. Guido. Red blood cell deformation in microconfined flow. *Soft Matter* 5:3736–3740, 2009.
- ¹⁵⁶Tousia, N., B. Wang, K. Pant, M. F. Kiani, and B. Prabhakarpanian. Preferential adhesion of leukocytes near bifurcations is endothelium independent. *Microvasc. Res.* 80:384–388, 2010.
- ¹⁵⁷Uijttewaala, W. S., E. J. Nijhof, P. J. Bronkhorst, E. Den Hartog, and R. M. Heethaar. Near-wall excess of platelets induced by lateral migration of erythrocytes in flowing blood. *Am. J. Physiol.* 264:H1239–H1244, 1993.
- ¹⁵⁸Wang, T., T.-W. Pan, Z. W. Xing, and R. Glowinski. Numerical simulation of rheology of red blood cell rouleaux in microchannels. *Phys. Rev. E* 79:041916, 2009.
- ¹⁵⁹Waugh, R., and E. A. Evans. Thermoelasticity of red blood cell membrane. *Biophys. J.* 26:115–131, 1979.
- ¹⁶⁰Weinbaum, S., J. M. Tarbell, and E. R. Damiano. The structure and function of the endothelial glycocalyx layer. *Annu. Rev. Biomed. Eng.* 9:121–167, 2007.
- ¹⁶¹Wendt, J. F. (ed.). *Computational Fluid Dynamics*, 3rd ed. Berlin: Springer, 2009.
- ¹⁶²Woldhuis, B., G. J. Tangelder, D. W. Slaaf, and R. S. Reneman. Concentration profile of blood platelets differs in arterioles and venules. *Am. J. Physiol.* 262:H1217–H1223, 1992.
- ¹⁶³Yamaguchi, S., T. Yamakawa, and H. Niimi. Cell-free plasma layer in cerebral microvessels. *Biorheology* 29:251–260, 1992.
- ¹⁶⁴Zhang, J., P. C. Johnson, and A. S. Popel. Red blood cell aggregation and dissociation in shear flows simulated by lattice Boltzmann method. *J. Biomech.* 41:47–55, 2008.
- ¹⁶⁵Zhao, H., A. H. G. Isfahani, L. N. Olson, and J. B. Freund. Molecular dynamics simulations of tethered membranes with periodic boundary conditions. *J. Comput. Phys.* 229:3726–3744, 2010.
- ¹⁶⁶Zhao, H., and E. S. G. Shaqfeh. Shear-induced platelet margination in a microchannel. *Phys. Rev. E* 83:061924, 2011.
- ¹⁶⁷Zhao, H., E. S. G. Shaqfeh, and V. Narsimhan. Shear-induced particle migration and margination in a cellular suspension. *Phys. Fluids* 24:011902, 2012.
- ¹⁶⁸Zhao, Q., L. G. Durand, L. Allard, and G. Cloutier. Effects of a sudden flow reduction on red blood cell rouleau formation and orientation using RF backscattered power. *Ultrasound Med. Biol.* 24:503–511, 1998.